

---

*Final*  
*October 2020*



UNITED NATIONS ECONOMIC COMMISSION FOR EUROPE  
UNITED NATIONS CENTRE FOR TRADE FACILITATION  
AND ELECTRONIC BUSINESS (UN/CEFACT)

**BUSINESS REQUIREMENTS SPECIFICATION  
(BRS)**

**RAPID ALERT SYSTEM FOR FOOD AND FEED**

FINAL AFTER PUBLIC REVIEW

**Approved: UN/CEFACT Bureau on 19 October 2020**

**Version: 1.0**

## TABLE OF CONTENTS

<b>1</b>	<b>INTRODUCTION</b> .....	<b>3</b>
<b>2</b>	<b>OBJECTIVE</b> .....	<b>3</b>
<b>3</b>	<b>AUDIENCE</b> .....	<b>3</b>
<b>4</b>	<b>REFERENCE DOCUMENTS</b> .....	<b>3</b>
<b>5</b>	<b>CHANGE LOG</b> .....	<b>4</b>
<b>6</b>	<b>BUSINESS REQUIREMENTS VIEW</b> .....	<b>5</b>
6.1	BUSINESS DOMAIN VIEW.....	5
6.2	DEFINITIONS OF TERMS.....	5
6.3	BUSINESS PARTNER VIEW .....	6
6.4	BUSINESS ENTITY VIEW .....	6
<b>7</b>	<b>BUSINESS CHOREOGRAPHY VIEW</b> .....	<b>8</b>
7.1	BUSINESS PROCESS ELABORATION .....	8
7.2	BUSINESS PROCESS FLOW .....	8
7.3	BUSINESS COLLABORATION .....	9
7.4	BUSINESS TRANSACTION VIEW .....	10
7.4.1	<i>Business Transaction Use Case</i> .....	10
7.4.2	<i>Business Transaction Sequence</i> .....	11
<b>8</b>	<b>BUSINESS INFORMATION VIEW</b> .....	<b>12</b>
8.1	BUSINESS INFORMATION CLASS DIAGRAM.....	12
8.2	BUSINESS DOCUMENT .....	12
8.2.1	<i>RASFF Notification</i> .....	12
8.2.1	<i>Business Rules</i> .....	20
	<b>Figure 6-2 Business Partner View</b> .....	<b>6</b>
	<b>Figure 6-3 Conceptual Data Model</b> .....	<b>7</b>
	<b>Figure 6-4 Business Document Life Cycle</b> .....	<b>7</b>
	<b>Figure 7-1 RASFF Notification process use case</b> .....	<b>8</b>
	<b>Figure 7-2 Business Process use case activity diagram</b> .....	<b>9</b>
	<b>Figure 7-3 The Business Collaboration Use Case diagram</b> .....	<b>9</b>
	<b>Figure 7-4 Business Transaction Use Case Provide RASFF Notification</b> .....	<b>10</b>
	<b>Figure 7-5 Activity Diagram Provide RASFF Notification</b> .....	<b>11</b>
	<b>Figure 7-6 Business Transaction Message Sequence Diagram</b> .....	<b>11</b>
	<b>Figure 8-1 Business Information Class diagram</b> .....	<b>12</b>
	<b>Table 7-1 Business Transaction Use Case Description Provide Notification</b> .....	<b>10</b>
	<b>Table 8-1 RASFF Notification message assembly</b> .....	<b>12</b>
	<b>Table 8-2 RASFF Notification message data components</b> .....	<b>12</b>

## 1 Introduction

The current practice of the exchange of business documents (a.k.a. business data exchange structures or messages) by means of telecommunications – usually defined as e-Business presents a major opportunity to improve the competitiveness of companies, especially for Small and Medium Enterprises (SME). The Rapid Alert for Food & Feed (RASFF) Process has been compiled using the RASFF system and process of the European Commission and European Food Safety Authority (EFSA) as a base, with contributions of the Dutch Food Safety Authority and other relevant organisations. The generic design is offering Control Authorities in the domain of Health and Food Safety and other authorities (such as Customs) the opportunity to contextualize the information by using the UN/CEFACT Core Component Business Document Assembly (CCBDA) methodology.

The RASFF process is to provide information about measures taken responding to serious risks detected in relation to food or feed<sup>1</sup> from control authorities to a central Rapid Alert System. Whenever a member of the RASFF network has any information relating to the existence of a serious direct or indirect risk to human health deriving from food or feed, this information is immediately notified. The electronic swift exchange of information ensures the highest possible level of consumer protection among public health authorities on food and harmonization is one of the pillars of the UN/CEFACT standards. With harmonization often comes simplicity.

The RASFF process is to provide information about measures taken responding to serious risks detected in relation to food or feed. A distinction is made between notifications requiring rapid action (alert notifications) and other notifications (information notifications and border rejection notifications).

## 2 Objective

The objective of this document is to standardize the Business processes, the Business transactions and the Information entities of the RASFF process in accordance with the regulations. The business process is the detailed description of the way business partners intend to play their respective roles, establish business relations and share responsibilities to interact efficiently with the support of their respective information systems. Each Business transaction is realized by an exchange of Business documents. The sequences in which these documents are used, composes a particular instance of a scenario and are presented as activity diagrams in the document.

## 3 Audience

The audience of this document is all users who are interested in the RASFF process and information data.

## 4 Reference Documents

Knowledge and application of the following standards is crucial to the development of quality business requirements specifications.

- UN/CEFACT Code Management User Guide Version 1 (5 Mar 2018)
- UN/CEFACT Modeling Methodology (CEFACT/TMG/N090R10, Nov 2001)
- UN/CEFACT Core Components Technical Specification – Part 8 of the ebXML Framework, Version 2.01

---

<sup>1</sup>In Europe the legal basis of the RASFF is Regulation (EC) No 178/2002 of the European Parliament and of the Council. The RASFF system as a network involving the Member States, the Commission as member and manager of the system and EFSA.

- UN/CEFACT Core Components Business Document Assembly Technical Specification, CCBDA, version 1.0

## 5 Change log

<b>Date of Change</b>	<b>Version</b>	<b>Changed</b>	<b>Summary of Changes</b>
05-Jul-2020	1.0.00	-	Initial Draft
14-Jul-2020	1.0.01	Added table 8-1	Message assembly table

---

## 6 Business Requirements View

### 6.1 Business Domain View

This section describes the extent and limits of the business process within the supply chain being described in this document.

**Note:**

The processes defined apply only to the collaboration between Sender (Control Authority, issuer of a business document) and Receiver (RASFF system, approver of the business document). Communication through third parties (such as EDI Platforms, networks etc.) are outside the scope of this BRS.

The requirements for the RASFF process will mainly be driven by regulations and therefore the requirement lists below are kept short:

Nr.	Business Requirement Statement
A.1	Members of RASFF network can immediately notify the RASFF system when they have information regarding a serious health risk deriving from food or feed. The specific criteria triggering a notification are set out in legislation

Nr.	Data Domains
B.1	Address
B.2	Analysis
B.3	Business Profile
B.4	Certificate
B.5	Characteristic
B.6	Consignment
B.7	Consignment Item
B.8	Contact
B.9	Country and Country Sub-Division
B.10	Damage (Risk)
B.11	Exchanged Document
B.12	Health Hazard
B.13	Location
B.14	Note
B.15	Notification
B.16	Observation Result
B.17	Party
B.18	Period
B.19	Process
B.20	Referenced Document
B.21	Regulation
B.22	Regulatory Control
B.23	Sampled Object
B.24	Transport Means

### 6.2 Definitions of terms

Term	Definition
Alert Notification	An 'alert notification' or 'alert' is sent when a food, feed or food contact material presenting a serious risk is on the market and when rapid action is or might be required in another country than the notifying country.
Information notification	An 'information notification' concerns a food, feed or food contact material for which a risk has been identified that does not require rapid

Term	Definition
	action either because the risk is not considered serious or the product is not on the market at the time of notification.
Border Rejection Notification	A ‘border rejection notification’ concerns a consignment of food, feed or food contact material that was refused entry into the EU for reason of a risk to human health and also to animal health or to the environment if it concerns feed.
News Notification	A news notification concerns any type of information related to the safety of food or feed which has not been communicated as an alert, information or border rejection notification, but which is judged interesting for the food and feed control authorities in member countries.
Original Notifications and Follow-up Notifications	A RASFF notification referring to one or more consignments of a food, feed or food contact material that were not previously notified to the RASFF is an ‘original’ notification, classified as alert, information or border rejection notification. In reaction to such a notification, members of the RASFF network can transmit ‘follow-up’ notifications which refer to the same consignments and which add information to the original notification such as information on hazards, product traceability or measures taken.
Rejected and Withdrawn Notifications	An original notification sent by a member of the RASFF can be rejected from transmission through the RASFF system, as proposed by the Commission after verification and in agreement with the notifying country, if the criteria for notification are not met or if the information transmitted is insufficient.

### 6.3 Business Partner View

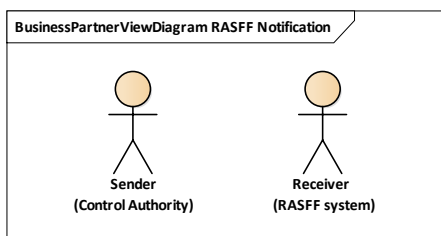


Figure 6-1 Business Partner View

Partner	Definition
Sender	Sender of the RASFF Notification (Control Authority, Issuer)
Receiver	Receiver of the RASFF Notification (RASFF system, Approver)

### 6.4 Business Entity View

This conceptual model represents the set of data for the electronic exchange of RASFF notification information.

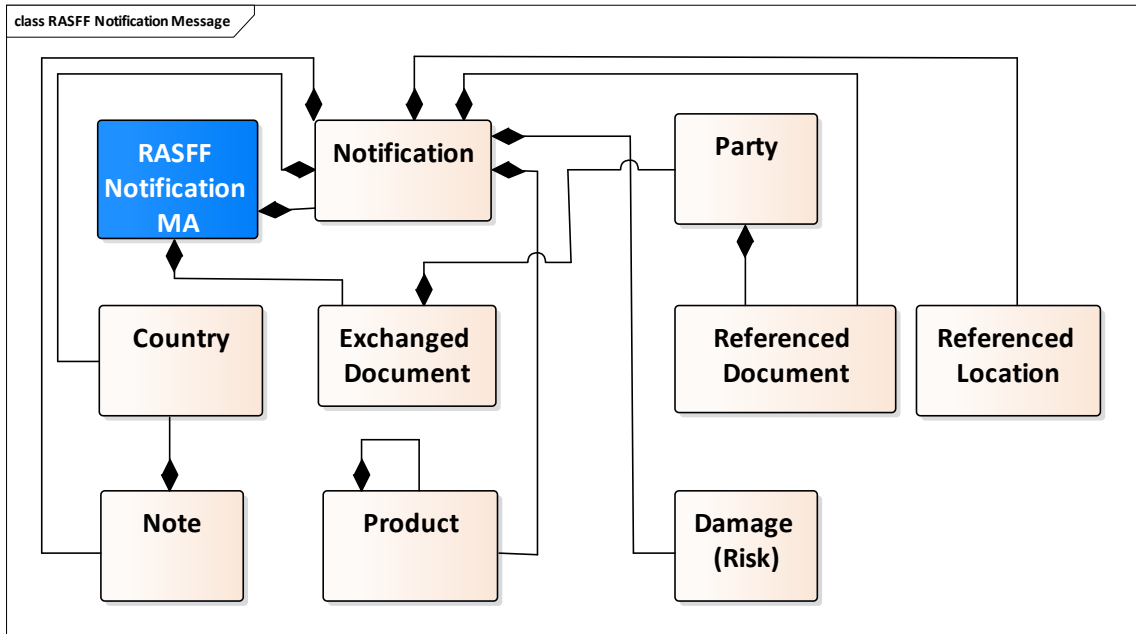


Figure 6-2 Conceptual Data Model

The life cycle state of a RASFF Notification may be rejected or withdrawn. Below diagram shows the Entity Life Cycle diagram. The RASFF Notification Business Entity has the state “Issued” as a result of the exchange of information between the Control Authority and the RASFF system in the Notification Process.

Following the verification and if the criteria for notification are not met the RASFF system will recognize the state of the RASFF Notification as “Criteria met “.

If there is a rejection or withdraw by the RASFF system, the Control Authority will recognize the state as “Rejected” or “withdrawn”. The Control Authority will not be aware of these later states until the RASFF system communicates with the Control Authority. This is outside the scope of this BRS.

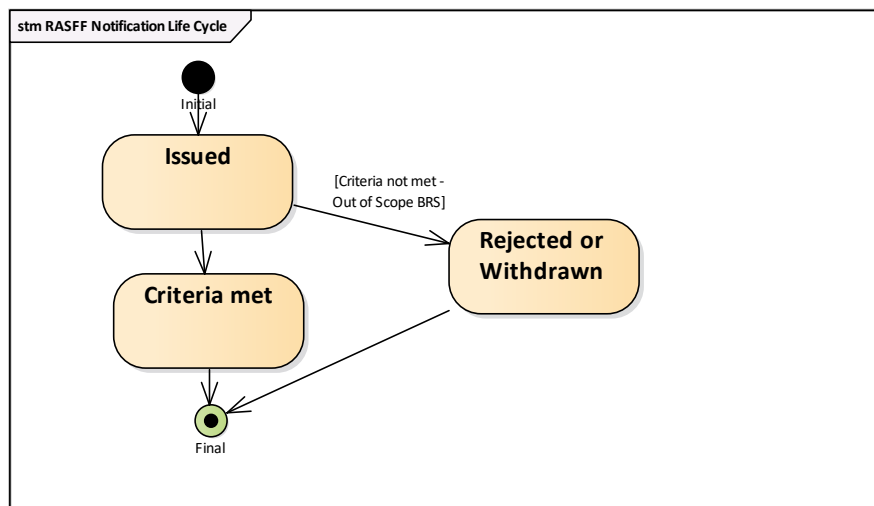


Figure 6-3 Business Document Life Cycle

---

## 7 Business Choreography View

### 7.1 Business Process Elaboration

The process RASFF Notification process is shown in the following Use Case Diagram.

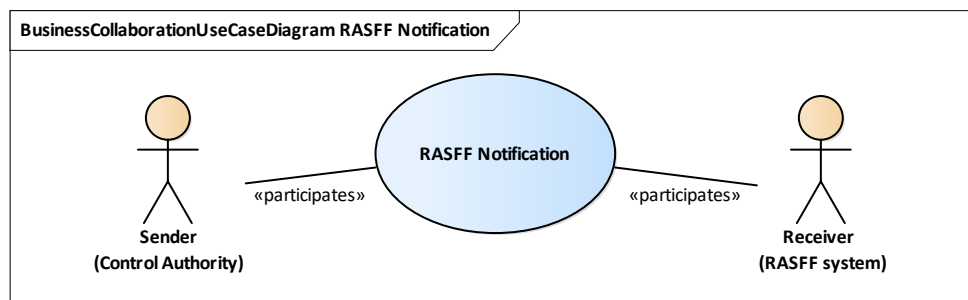


Figure 7-1 RASFF Notification process use case

All starts with the notification by a member (a Control Authority) of the RASFF network of the existence of a serious, direct or indirect, risk to public health linked to food or feed. This information reaches the the RASFF system, which in turn verifies the notification and immediately transmits it to the other members of the network.

A common template is used to provide all relevant and useful information including identification of the product, hazard(s) found, measure(s) taken and information on tracing the product.

Upon receiving the information, other members (countries) check if they are concerned. If the product is on their market, they are able to trace it using the information in the notification. They report back on what they have found and what measures they have taken for a transparent and mutual information of all RASFF members<sup>2</sup>.

The notifications concern controls at the borders, at points of entry or border inspection posts when a consignment was not accepted for import (marked as “border control consignment detained”) or when a sample was taken for analysis at the border (marked as "screening") and the consignment was released (marked as “border control - consignment released”). Official controls on the internal market come next. Finally, other notifications can arise from a consumer complaint, a company notifying the outcome of a check it carried out on its own account, or a food poisoning incident.

### 7.2 Business Process Flow

When a problem is detected, it is the task of the National Food and Feed authorities (Control Authority) to take action. This includes any action necessary to immediately address the risk but also to prevent a similar risk reoccurring. A whole range of actions are carried out and reported back through the RASFF: withdrawal or recall of the products and their possible destruction, information to the public, re-dispatch to origin etc (not in scope of this BRS).

The Control Authority and sender of the RASFF Notification generates or extracts the necessary data from his database. Assuring that all necessary data is collected, the process of sending the RASFF Notification to the RASFF system using a connection to the RASFF network. At the moment acknowledgement of the message is out of scope of this BRS.

---

<sup>2</sup> In case of products from the EU, the Member State from which the product originates also reports on the outcome of its investigations with regard to the origin, distribution and cause of the problem identified. This allows other member countries to take rapid action if and when needed.



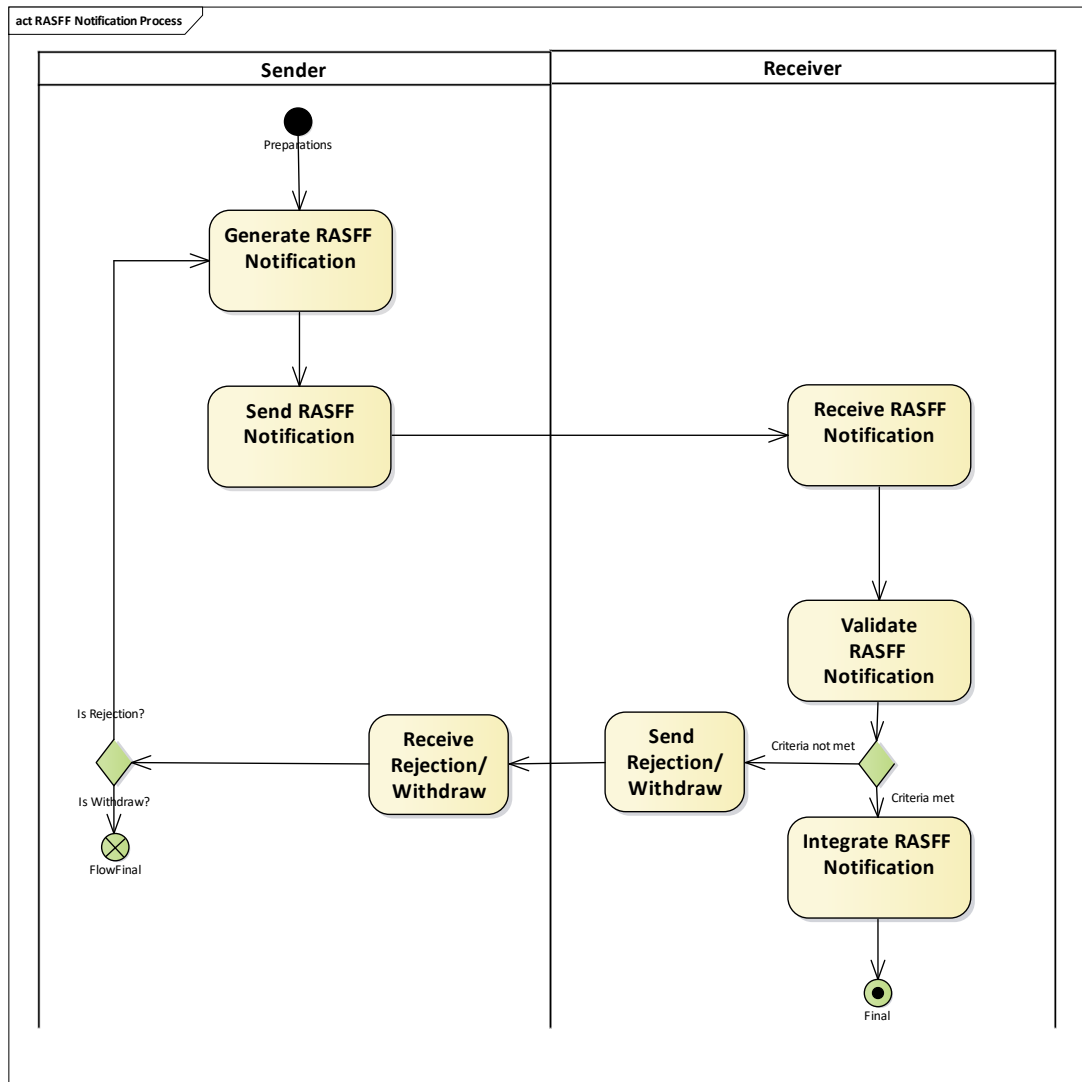


Figure 7-2 Business Process use case activity diagram

### 7.3 Business Collaboration

The Business Collaboration Use Case Diagram “Provide Notification” shows the only one transaction that make up the Notification process. It also links the authorised roles from each transaction to the Business Partner Types (Sender and Receiver).

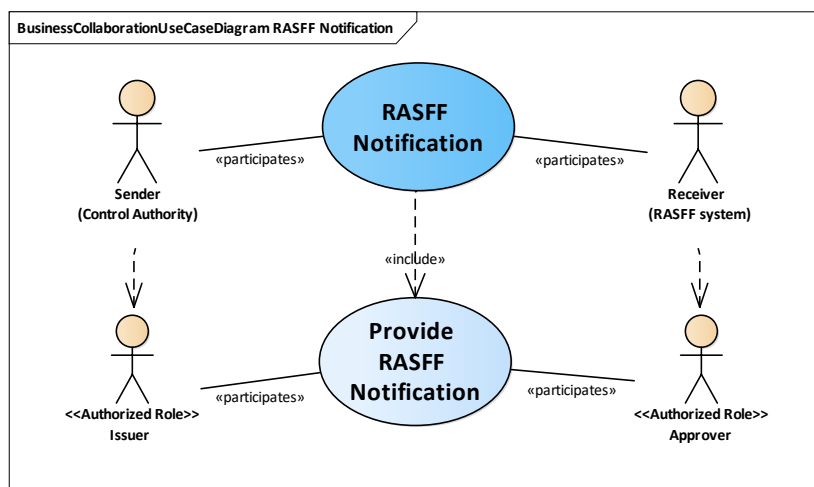


Figure 7-3 The Business Collaboration Use Case diagram

The Business Collaboration Use Case Diagram “Provide RASFF Notification” shown in above figure shows one transaction that make up the “RASFF Notification” process. It also links the authorised roles from this transaction to the Business Partner Types (Sender and Receiver).

## 7.4 Business Transaction View

### 7.4.1 Business Transaction Use Case

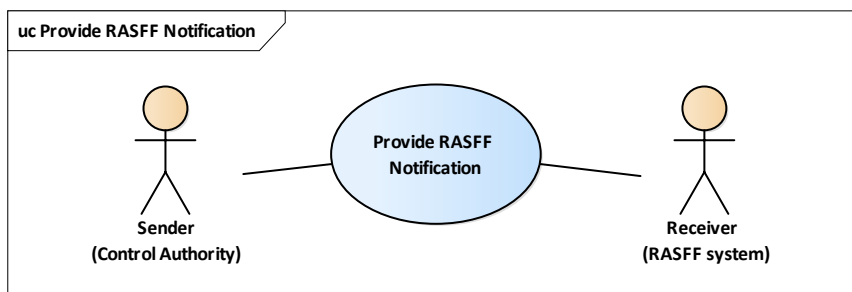


Figure 7-4 Business Transaction Use Case Provide RASFF Notification

Table 7-1 Business Transaction Use Case Description Provide Notification

uc Provide RASFF Notification	
<b>Identifier</b>	ProvideRASFFNotification
<b>Business Message Type</b>	RASFF Notification
<b>Description</b>	A RASFF notification is sent from the Control Authority to the RASFF System; Once the RASFF system has processed the business document, the process ends.
<b>Partner Types</b>	Sender, Receiver
<b>Authorized Roles</b>	Issuer, Approver.
<b>Legal Implications</b>	None
<b>Initial/Terminal Events</b>	<ul style="list-style-type: none"> <li>Initial: the RASFF Notification is finalized and ready to be generated as a RASFF notification to be send to the RASFF system.</li> <li>Final: the RASFF Notification has been received by the RASFF system and the approver has accepted the notification.</li> </ul>
<b>Scope</b>	Information exchange between Sender and Receiver concerning the state of a business document received earlier.
<b>Exceptions</b>	If the approver (the RASFF system) rejects or withdraws the notification because the criteria for notification are not met or if the information transmitted is insufficient. The approver will communicate this state with the issuer (Control Authority) of the notification. This is outside the scope of this BRS.
<b>Boundary</b>	
<b>Constraints</b>	

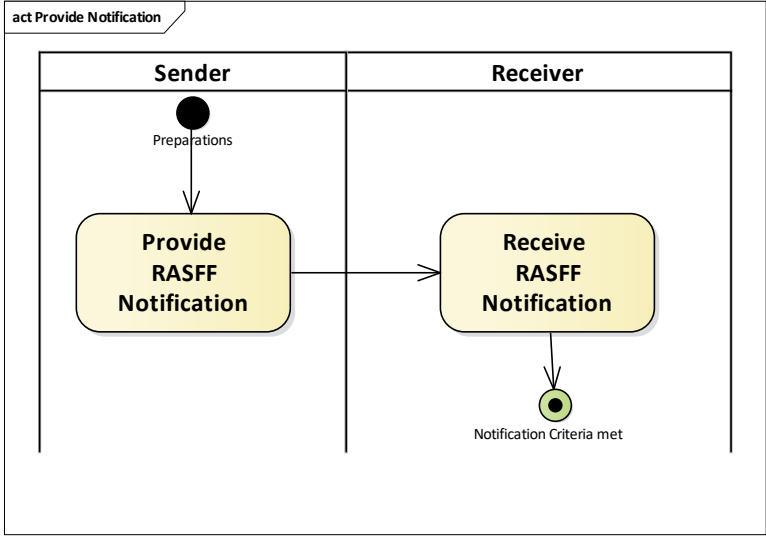


Figure 7-5 Activity Diagram Provide RASFF Notification

### 7.4.2 Business Transaction Sequence

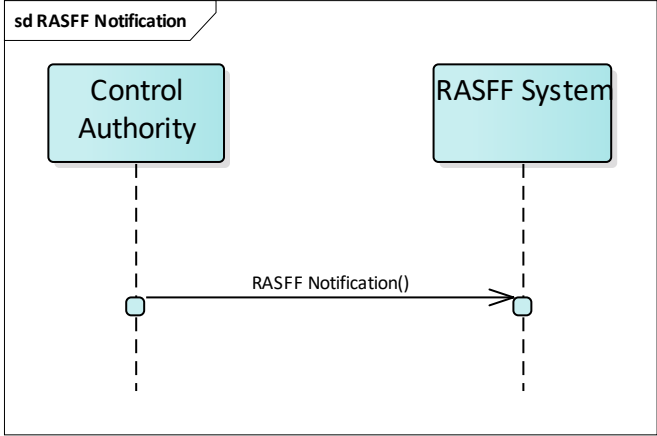


Figure 7-6 Business Transaction Message Sequence Diagram

## 8 Business Information View

### 8.1 Business Information Class Diagram

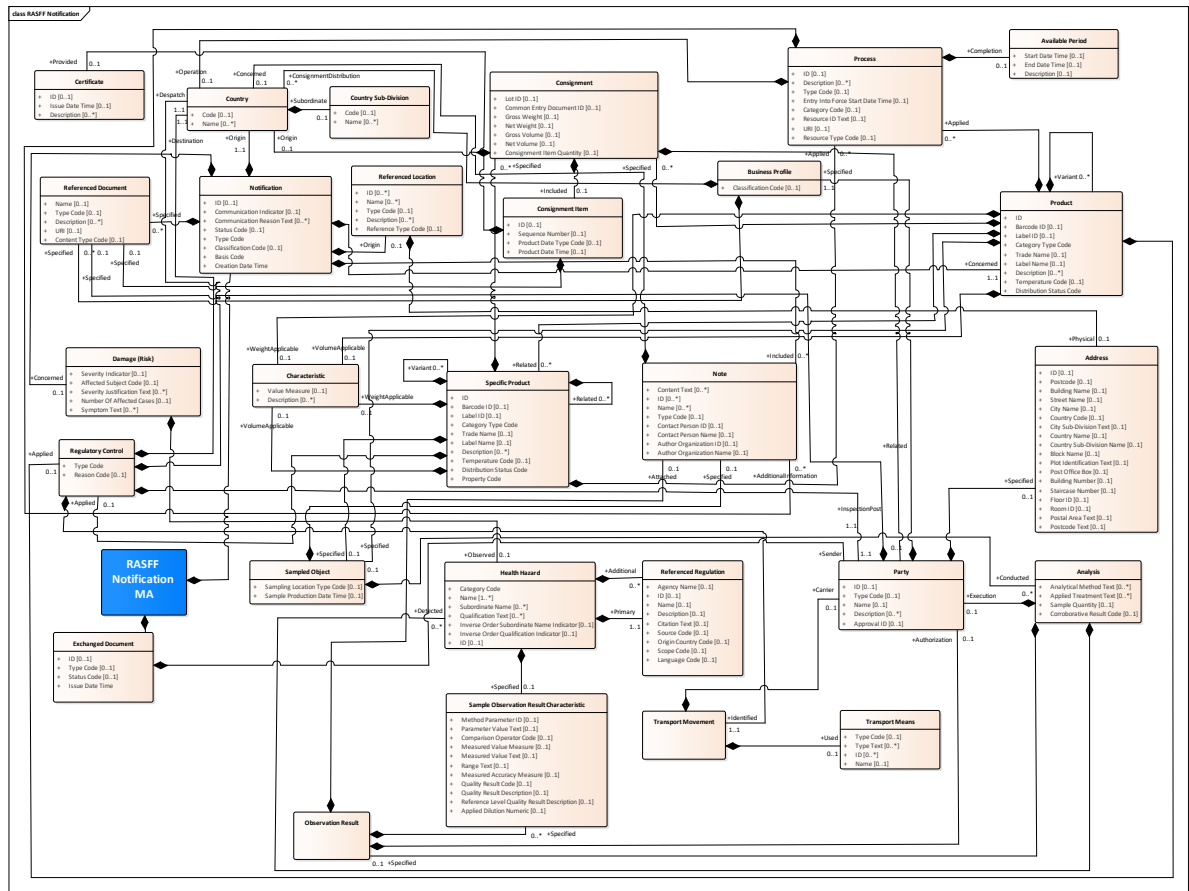


Figure 8-1 Business Information Class diagram

### 8.2 Business Document

#### 8.2.1 RASFF Notification

Note: Geographical associations within Referenced Location are not listed in above diagram and below. For more details see other publications formats of UN/CEFACT.

Table 8-1 RASFF Notification message assembly

Entity	Name	Definition	Min	Max
Entity	RASFF Message	A message submitted to or retrieved from a Rapid Alert System for Food and Feed (RASFF) network informing about a situation that appears to be a threat for the environment, animals or human health.		
Assoc	Exchanged Document	A collection of data for a piece of written, printed or electronic matter that is exchanged between two or more parties.		
Assoc	RASFF Notification	The notification content of this RASFF notification message.		

Table 8-2 RASFF Notification message data components

Entity	Name	Definition	Data Type	Min	Max
Entity	Exchanged Document	A collection of data that is exchanged between two or more parties			
Attr.	ID	The identification of this exchanged document.	Identifier	0	1

Entity	Name	Definition	Data Type	Min	Max
<b>Attr.</b>	Type Code	The code specifying the type of exchanged document, such as member state create or member state submit.	Code	0	1
<b>Attr.</b>	Status Code	The code specifying the status of this exchanged document.	Code	0	1
<b>Attr.</b>	Issue Date Time	The date, time, date time or other date time value for the issuance of this exchanged document.	Date Time	1	1
<b>Assoc.</b>	Sender	The party that sends this exchanged document.		1	1
<b>Entity</b>	<b>Specific Product</b>	<b>A specific product.</b>			
<b>Attr.</b>	ID	The identification of this specific product.	Identifier	1	1
<b>Attr.</b>	Barcode ID	The barcode identification of this specific product.	Identifier	0	1
<b>Attr.</b>	Label ID	The label identification of this specific product.	Identifier	0	1
<b>Attr.</b>	Category Type Code	The code specifying the type (category) of this specific product, such as alcoholic drink or sauce (business term: "Product Category") .	Code	1	1
<b>Attr.</b>	TName	The name of this specific product.	Text	0	1
<b>Attr.</b>	Label Name	The name on label of this specific product (business term: "Name on label")	Text	0	1
<b>Attr.</b>	Description	A description of this specific product (business term"Aspect")	Text	0	unbounded
<b>Attr.</b>	Temperature Code	The code specifying the temperature of this specific product, such as frozen or ambient.	Code	0	1
<b>Attr.</b>	Distribution Status Code	The code specifying the distribution status of this specific product.	Code	1	1
<b>Attr.</b>	Property Code	The code specifying the property of this specific product, such as ingredient or processed product.	Code	1	1
<b>Assoc.</b>	Consignment	A consignment specified for this specific product.		0	unbounded
<b>Assoc.</b>	Regulatory Control	The regulatory control applicable to this specific product.		0	1
<b>Assoc.</b>	Sampled Object	The sampled object specified for this specific product.		0	1
<b>Assoc.</b>	Process	A process applied to this specific product.		0	unbounded
<b>Assoc.</b>	Volume Characteristic	The volume characteristic applicable to this specific product.		0	1
<b>Assoc.</b>	Weight Characteristic	The weight characteristic applicable to this specific product.		0	1
<b>Assoc.</b>	Product Related	A product that is related to this specific product.		0	unbounded
<b>Assoc.</b>	Product Variant	A product that is a variant of this specific product.		0	unbounded

Entity	Name	Definition	Data Type	Min	Max
<b>Entity</b>	<b>Analysis</b>	The analysis, a detailed examination, used for a sampling.			
<b>Attr.</b>	Analytical Method Text	An analytical method for this analysis.	Text	0	unbounded
<b>Attr.</b>	Applied Treatment Text	A treatment applied during this analysis.	Text	0	unbounded
<b>Attr.</b>	Sample Quantity	The number of samples for this analysis.	Quantity	0	1
<b>Attr.</b>	Corroborative Result Code	The code specifying the corroborative result for this analysis, such as confirmed or not confirmed.	Code	0	1
<b>Assoc.</b>	Execution Party	The party executing this analysis.		0	1
<b>Assoc.</b>	Detected Health Hazard	A health hazard detected by this analysis.		0	unbounded
<b>Assoc.</b>	Observation Result	The observation result specified for this analysis.		0	1
<b>Entity</b>	<b>Business Profile</b>	Distinctive features or characteristics of a business.			
<b>Attr.</b>	Classification Code	The code specifying the classification of the business in this business profile.	Code	0	1
<b>Assoc.</b>	Consignment Distribution Country	A distribution country for consignments of the business in this business profile.		0	unbounded
<b>Assoc.</b>	Referenced Document	A document referenced for this business profile.		0	unbounded
<b>Entity</b>	<b>Certificate</b>	An official document that may be used to prove that the facts it states are true.			
<b>Attr.</b>	ID	The identification for this certificate.	Identifier	0	1
<b>Attr.</b>	Issue Date Time	The date, time, date time, or other date time value when this certificate was issued.	Date Time	0	1
<b>Attr.</b>	Description	A description of this certificate.	Text	0	unbounded
<b>Entity</b>	<b>Characteristic</b>	A prominent attribute or aspect of a product.			
<b>Attr.</b>	Value Measure	The measure of the value for this characteristic.	Measure	0	1
<b>Attr.</b>	Description	A description of this characteristic.	Text	0	unbounded
<b>Entity</b>	<b>Consignment Item</b>	An item within a consignment of goods separately identified for transport and customs purposes.			
<b>Attr.</b>	ID	The identification of this consignment item.	Identifier	0	1
<b>Attr.</b>	Sequence Number	The sequence number for this consignment item.	Numeric	0	1
<b>Attr.</b>	Product Date Type Code	The code specifying the product date type, such as expiry or best before, for this consignment item.	Code	0	1
<b>Attr.</b>	Product Date Time	The date, time, date time, or other date time value related to the product contained in this consignment item.	Date Time	0	1

Entity	Name	Definition	Data Type	Min	Max
<b>Assoc.</b>	Referenced Document	The document associated with this consignment item.		0	1
<b>Assoc.</b>	Provided Certificate	The certificate provided for this consignment item.		0	1
<b>Entity</b>	<b>Consignment</b>	A separately identifiable collection of goods items distributed from one consignor to one consignee.			
<b>Attr.</b>	Lot ID	The lot identification for this consignment.	Identifier	0	1
<b>Attr.</b>	Common Entry Document ID	The Common Veterinary Entry Document (CVED) or Common Entry Document (CED) identification for this consignment or part of this consignment.	Identifier	0	1
<b>Attr.</b>	Gross Weight	The gross weight (mass) of this consignment.	Measure	0	1
<b>Attr.</b>	Net Weight	The net weight (mass) of this consignment.	Measure	0	1
<b>Attr.</b>	Gross Volume	The gross volume of this consignment.	Measure	0	1
<b>Attr.</b>	Net Volume	The net volume of this consignment.	Measure	0	1
<b>Attr.</b>	Consignment Item Quantity	The number of consignment items within this consignment.	Quantity	0	1
<b>Assoc.</b>	Included Consignment Item	The consignment item included in this consignment.		0	1
<b>Assoc.</b>	Origin Country	The country of origin for this consignment.		0	1
<b>Assoc.</b>	Related Distribution Party	The distribution party related to this consignment.		0	1
<b>Entity</b>	<b>Country Sub-Division</b>	An area of land which is a sub-division within a country.			
<b>Attr.</b>	ID	The identification for this country sub-division.	Identifier	0	1
<b>Attr.</b>	Name	A name of this country sub-division.	Text	0	unbounded
<b>Entity</b>	<b>Country</b>	The area of land that belongs to a nation.			
<b>Attr.</b>	ID	The identification of this country.	Identifier	0	1
<b>Attr.</b>	Name	A name of this country.	Text	0	unbounded
<b>Assoc.</b>	Subordinate Country Sub-Division	The country sub-division subordinate to this country.		0	1
<b>Entity</b>	<b>Applicable Damage</b>	Loss or harm to persons, animals or the environment resulting from one or more hazards (business term: "Risk").			
<b>Attr.</b>	Severity Indicator	The indication of whether or not this damage is severe.	Indicator	0	1
<b>Attr.</b>	Affected Subject Code	The code specifying subjects affected by this damage, such as environment, animal health or human health.	Code	0	1
<b>Attr.</b>	Severity Justification Text	A severity justification for this damage.	Text	0	unbounded
<b>Attr.</b>	Affected Case Numeric	The number of cases affected by this damage.	Numeric	0	1
<b>Attr.</b>	Symptom Text	A symptom or symptoms for this damage.	Text	0	unbounded

Entity	Name	Definition	Data Type	Min	Max
<b>Assoc.</b>	Observed Health Hazard	The health hazard observed in relation to this damage.		0	1
<b>Entity</b>	Referenced Document	A collection of data that provides information or evidence.			
<b>Attr.</b>	Name	The name for this document.	Text	0	1
<b>Attr.</b>	Type Code	The code specifying the type of this document.	Code	0	1
<b>Attr.</b>	Description	A description of this document.	Text	0	unbounded
<b>Attr.</b>	URI	The Uniform Resource ID (URI) for this document.	Identifier	0	1
<b>Attr.</b>	Content Type Code	The code specifying the content type of this document.	Code	0	1
<b>Entity</b>	Health Hazard	A threat to health, such as heavy metals, foreign bodies, contaminations, pesticides, biotoxins or residues of pesticides.			
<b>Attr.</b>	Category Code	The code specifying a category of this health hazard, such as allergens.	Code	1	1
<b>Attr.</b>	Name	A name for this health hazard.	Text	1	unbounded
<b>Attr.</b>	Subordinate Name	A subordinate name for this health hazard.	Text	0	unbounded
<b>Attr.</b>	Qualification Text	A qualification for this health hazard.	Text	0	unbounded
<b>Attr.</b>	Inverse Order Subordinate Name Indicator	The indication of whether or not the subordinate name is displayed in reverse order, that is in front of the name, for this health hazard.	Indicator	0	1
<b>Attr.</b>	Inverse Order Qualification Indicator	The indication of whether or not the qualification is displayed in reverse order, that is in front of the name, for this health hazard.	Indicator	0	1
<b>Attr.</b>	ID	The identification for this health hazard.	Identifier	0	1
<b>Assoc.</b>	Primary Referenced Regulation	The primary regulation referenced for this health hazard.		1	1
<b>Assoc.</b>	Additional Referenced Regulation	An additional regulation referenced for this health hazard.		0	unbounded
<b>Assoc.</b>	Sample Observation Result Characteristic	The sample observation result characteristic specified for this health hazard.		0	1
<b>Entity</b>	Note	A textual or coded description, such as a remark or additional information.			
<b>Attr.</b>	Content Text	Content of this note.	Text	0	unbounded
<b>Attr.</b>	ID	An identification for this note.	Identifier	0	unbounded
<b>Attr.</b>	Name	A name for this note.	Text	0	unbounded
<b>Attr.</b>	Type Code	The code specifying the type of note.	Code	0	1
<b>Attr.</b>	Contact Person ID	The identification of the contact person for this note.	Identifier	0	1
<b>Attr.</b>	Contact Person Name	The name of the contact person for this note.	Text	0	1



Entity	Name	Definition	Data Type	Min	Max
<b>Attr.</b>	Author Organization ID	The identification of the organization authoring this note.	Identifier	0	1
<b>Attr.</b>	Author Organization Name	The name of the organization authoring this note.	Text	0	1
<b>Assoc.</b>	Concerned Country	The country concerned by this note.		0	1
<b>Entity</b>	<b>Notification</b>	A way of informing of a situation that appears to be a threat for the environment, animals or human health.			
<b>Attr.</b>	ID	The identification of this notification.	Identifier	0	1
<b>Attr.</b>	Communication Indicator	The indication of whether or not this notification has been communicated, such as to the International Food Safety Authorities Network (INFOSAN).	Indicator	0	1
<b>Attr.</b>	Communication Reason Text	A communication reason for this notification.	Text	0	unbounded
<b>Attr.</b>	Status Code	The code specifying the status of this notification.	Code	0	1
<b>Attr.</b>	Type Code	The code specifying the type of notification.	Code	1	1
<b>Attr.</b>	Classification Code	The code specifying the classification of this notification.	Code	0	1
<b>Attr.</b>	Basis Code	The code specifying the basis for this notification.	Code	1	1
<b>Attr.</b>	Creation Date Time	The creation date for this notification.	Date Time	1	1
<b>Assoc.</b>	Origin Country	The country which is the origin of this notification.		1	1
<b>Assoc.</b>	Origin Referenced Location	The referenced location which is the origin of this notification.		0	1
<b>Assoc.</b>	Concerned Damage	Damage that is a concern of this notification.		0	1
<b>Assoc.</b>	Concerned Product	The product that is a concern of this notification.		1	1
<b>Assoc.</b>	Included Note	A note included in this notification.		0	unbounded
<b>Assoc.</b>	Referenced Document	A referenced document for this notification.		0	unbounded
<b>Entity</b>	<b>Observation Result</b>	A collection of diagnostic data, visual or technical, and processing data, performed on an object.			
<b>Assoc.</b>	Sample Observation Result Characteristic	A sample observation result characteristic specified for this observation result.		0	unbounded
<b>Assoc.</b>	Authorization Party	The authorization party for this observation result.		0	1
<b>Assoc.</b>	Attached Note	The note attached to this observation result.		0	1
<b>Entity</b>	<b>Party</b>	An individual, a group, or a body.			
<b>Attr.</b>	ID	The identification of this party.	Identifier	0	1
<b>Attr.</b>	Type Code	The code specifying the type of party.	Code	0	1
<b>Attr.</b>	Name	The name for this party.	Text	0	1
<b>Attr.</b>	Description	A description of this party.	Text	0	unbounded
<b>Attr.</b>	Approval ID	The approval identification of this party.	Identifier	0	1

Entity	Name	Definition	Data Type	Min	Max
<b>Assoc.</b>	Address	The address specified for this party.		0	1
<b>Assoc.</b>	Referenced Document	The document referenced by this party.		0	1
<b>Assoc.</b>	Business Profile	The business profile for this distribution party.		1	1
<b>Entity</b>	<b>Process</b>	<b>A measure taken for a particular product.</b>			
<b>Attr.</b>	ID	The identification of this process.	Identifier	0	1
<b>Attr.</b>	Description	A description of this process.	Text	0	unbounded
<b>Attr.</b>	Type Code	The code specifying the type of process, such as voluntary or compulsory.	Code	0	1
<b>Attr.</b>	Entry Into Force Start Date Time	The date, time, date time or other date time value for the entry into force start of this process.	Date Time	0	1
<b>Attr.</b>	Category Code	The code specifying a category for this process, such as withdraw from the market or destruction.	Code	0	1
<b>Attr.</b>	Resource ID Text	The resource identification for this process.	Text	0	1
<b>Attr.</b>	URI	The Uniform Resource ID (URI) for this process.	Identifier	0	1
<b>Attr.</b>	Resource Type Code	The code specifying the resource type for this process.	Code	0	1
<b>Assoc.</b>	Completion Available Period	The available period for completion of this process.		0	1
<b>Assoc.</b>	Operation Country	The country where the operation of this process occurs.		0	1
<b>Assoc.</b>	Additional Information Note	An additional information note for the process.		0	unbounded
<b>Entity</b>	<b>Product</b>	<b>A tangible output produced by human or mechanical effort or by a natural process.</b>			
<b>Attr.</b>	ID	The identification of this product.	Identifier	1	1
<b>Attr.</b>	Barcode ID	The barcode identification of this product.	Identifier	0	1
<b>Attr.</b>	Label ID	The label identification of this product.	Identifier	0	1
<b>Attr.</b>	Product Category Type Code	The code specifying the type (category) of product, such as alcoholic drink or sauce (business term: "Product Group").	Code	1	1
<b>Attr.</b>	Trade Name	The trade name of this product.	Text	0	1
<b>Attr.</b>	Label Name	The name on label of this product (business term: "Name on label")	Text	0	1
<b>Attr.</b>	Description	A description of this product (business term: "Aspect")	Text	0	unbounded
<b>Attr.</b>	Temperature Code	The code specifying the temperature of this product, such as frozen or ambient.	Code	0	1
<b>Attr.</b>	Distribution Status Code	The code specifying the distribution status of this product.	Code	1	1

Entity	Name	Definition	Data Type	Min	Max
<b>Assoc.</b>	Variant Product	A product that is a variant of this product.		0	unbounded
<b>Assoc.</b>	Consignment	A consignment specified for this product.		0	unbounded
<b>Assoc.</b>	Applied Regulatory Control	The regulatory control applicable to this product.		0	1
<b>Assoc.</b>	Sampled Object	The sampled object specified for this product.		0	1
<b>Assoc.</b>	Applied Process	A process applied to this product.		0	unbounded
<b>Assoc.</b>	Volume Applicable Characteristic	The volume characteristic applicable to this product.		0	1
<b>Assoc.</b>	Weight Applicable Characteristic	The weight characteristic applicable to this product.		0	1
<b>Assoc.</b>	Related Specific Product	A specific product related to this product.		0	unbounded
<b>Entity</b>	<b>Regulatory Control</b>	<b>A verification to satisfy a regulation, law or convention which is applicable.</b>			
<b>Attr.</b>	Type Code	The code specifying a type of regulatory control.	Code	1	1
<b>Attr.</b>	Reason Code	The code specifying the reason for this regulatory control.	Code	0	1
<b>Assoc.</b>	Despatch Country	The country of despatch of the product subject to this regulatory control.		1	1
<b>Assoc.</b>	Destination Country	The country of destination of the product subject to this regulatory control.		1	1
<b>Assoc.</b>	Transport Movement	The transport movement identified by this regulatory control.		1	1
<b>Assoc.</b>	Inspection Post Party	The border inspection post party performing this regulatory control.		1	1
<b>Entity</b>	<b>Sampled Object</b>	<b>The physical object from which a sample has been taken.</b>			
<b>Attr.</b>	Sampling Location Type Code	The code specifying the type of sampling location for this sampled object, such as manufacturer or consumer.	Code	0	1
<b>Attr.</b>	Sample Production Date Time	The date when samples were produced from this sampled object.	Date Time	0	1
<b>Assoc.</b>	Note	The note specified for this sampled object.		0	1
<b>Assoc.</b>	Conducted Analysis	An analysis conducted on this sampled object.		0	unbounded
<b>Entity</b>	<b>Transport Means</b>	<b>A device or method used to convey people, goods, or other objects from place to place.</b>			
<b>Attr.</b>	Type Code	The code specifying the type of transport means.	Code	0	1
<b>Attr.</b>	Type Text	A type of this transport means.	Text	0	unbounded
<b>Attr.</b>	ID	An identification for this transport means, such as the International Maritime	Identifier	0	unbounded

Entity	Name	Definition	Data Type	Min	Max
		Organization number for a vessel.			
<b>Attr.</b>	Name	The name of this transport means.	Text	0	1
<b>Entity</b>	Available Period	A specific period of time such as the length of time between two known date/time points, from a start date onwards, or up to an end date for which something is available.			
<b>Attr.</b>	Start Date	The date, time, date time or other date time value for the start of this available period of time.	Date Time	0	1
<b>Attr.</b>	Name	The date, time, date time or other date time value for the end of this available period of time.	Date Time	0	1
<b>Attr.</b>	Description	The description of this available period.	Text	0	1
<b>Attr.</b>	Name	The name of this transport means.	Text	0	1
<b>ABIE</b>	Referenced Location	A reference to a physical location or place.			
<b>BBIE</b>	ID	An identification for this referenced location such as a United Nations Blue Number (UNBN) or GS1 Global Location Number (GLN).	Identifier	0	unbounded
<b>BBIE</b>	Name	A name of this referenced location.	Text	0	unbounded
<b>BBIE</b>	Type Code	The code specifying the type of referenced location.	Code	0	1
<b>BBIE</b>	Description	A description for this referenced location.	Text	0	unbounded
<b>BBIE</b>	Reference Type. Code	The code specifying the reference type of this referenced location.	Code	0	1
<b>ASBIE</b>	Physical Address	The physical address of this referenced location.		0	1

### 8.2.1 Business Rules

According to the regulations of the Authorities of respective countries.