

*Final*  
*October 2020*



UNITED NATIONS ECONOMIC COMMISSION FOR EUROPE

UNITED NATIONS CENTRE FOR TRADE FACILITATION  
AND ELECTRONIC BUSINESS (UN/CEFACT)

**BUSINESS REQUIREMENTS SPECIFICATION  
(BRS)**

**CROSS INDUSTRY EXPORT PACKING  
LIST PROCESS**

FINAL AFTER PUBLIC REVIEW

**Approved: UN/CEFACT Bureau on 19 October 2020**

**Version: 1.0**

**TABLE OF CONTENTS**

<b>1</b>	<b>INTRODUCTION</b> .....	<b>4</b>
<b>2</b>	<b>OBJECTIVE</b> .....	<b>4</b>
<b>3</b>	<b>AUDIENCE</b> .....	<b>4</b>
<b>4</b>	<b>REFERENCE DOCUMENTS</b> .....	<b>4</b>
<b>5</b>	<b>CHANGE LOG</b> .....	<b>5</b>
<b>6</b>	<b>BUSINESS REQUIREMENTS VIEW</b> .....	<b>6</b>
6.1	BUSINESS DOMAIN VIEW.....	6
6.2	DEFINITION OF TERMS .....	8
6.3	BUSINESS PARTNER VIEW .....	8
6.4	BUSINESS ENTITY VIEW .....	9
<b>7</b>	<b>BUSINESS CHOREOGRAPHY VIEW</b> .....	<b>11</b>
7.1	BUSINESS PROCESS ELABORATION .....	11
7.2	BUSINESS PROCESS FLOW .....	12
7.3	BUSINESS COLLABORATION .....	13
7.4	BUSINESS TRANSACTION VIEW .....	14
7.4.1	<i>Provide Export Packing List (Business Transaction)</i> .....	14
7.4.2	<i>Correct Export Packing List (Business Transaction)</i> .....	15
<b>8</b>	<b>BUSINESS INFORMATION VIEW</b> .....	<b>16</b>
8.1	BUSINESS DOCUMENTS.....	16
8.1.1	<i>Export Packing List Message Assembly</i> .....	16
8.1.1	<i>Export List Document Data Components</i> .....	16
8.1.2	<i>Business Rules</i> .....	32

**TABLE OF FIGURES and TABLES**

<b>Figure 6-1</b>	<b>Positioning Export Packing List within BUY-SHIP-PAY Process Model</b> .....	<b>6</b>
<b>Figure 6-2</b>	<b>Business partners</b> .....	<b>8</b>
<b>Figure 6-3</b>	<b>Canonical Data Model</b> .....	<b>9</b>
<b>Figure 6-4</b>	<b>Business Entity Life Cycle Diagram</b> .....	<b>10</b>
<b>Figure 7-1</b>	<b>Scope of the Export Packing List process</b> .....	<b>11</b>
<b>Figure 7-2</b>	<b>Business Process Activity Diagram</b> .....	<b>12</b>
<b>Figure 7-3</b>	<b>The Business Collaboration diagram</b> .....	<b>13</b>
<b>Figure 7-4</b>	<b>Business Collaboration Protocol - Activity Diagram</b> .....	<b>13</b>
<b>Figure 7-5</b>	<b>Business Transaction Use Case Export Packing List Diagram</b> .....	<b>14</b>
<b>Figure 7-6</b>	<b>Activity Diagram Advise Export Packing List</b> .....	<b>14</b>
<b>Figure 7-7</b>	<b>Business Transaction Use Case Diagram Correct Export Packing List</b> .....	<b>15</b>
<b>Figure 8-8</b>	<b>Activity Diagram Correct Export Packing List</b> .....	<b>15</b>

<b>Table 6-1 BUY-SHIP-PAY context categories .....</b>	<b>6</b>
<b>Table 6-2 Business Requirements Statement.....</b>	<b>6</b>
<b>Table 6-3 Data Domains.....</b>	<b>7</b>
<b>Table 6-4 Definition of terms .....</b>	<b>8</b>
<b>Table 6-5 Business Partners.....</b>	<b>9</b>
<b>Table 7-1 Business Transaction Use Case Description Provide Export Packing List.....</b>	<b>14</b>
<b>Table 7-2 Business Transaction Use Case Description Correct Export Packing List.....</b>	<b>15</b>
<b>Table 8-1 Export Packing List Message Assembly .....</b>	<b>16</b>
<b>Table 8-2 Export Packing List Data Components .....</b>	<b>16</b>

## 1 Introduction

The current practice of the exchange of business documents by means of telecommunications – usually defined as e-Business presents a major opportunity to improve the competitiveness of companies, especially for Small and Medium Enterprises (SME). Started as an initiative by CEN/ISSS work shop eBES, the European Expert Group 1 (EEG1) – Supply Chain & e-Procurement developed the Cross-Industry processes in 2006. The Cross-Industry Export Packing List process has been compiled within the context of the United Nations Development Account (UNDA) coronavirus (COVID-19) response project “Transport and Trade Connectivity in the Age of Pandemics”, with a view to increase the harmonization and standardization of data exchange in international transport, trade and logistics to reduce person-to-person contacts during the COVID-19 crisis and in the post-pandemic recovery.

The data exchange of Export Packing Lists is a data exchange to support sellers providing transport services providers with shipment delivery information. The structure behind the Export Packing List is according to the Buy-Ship-Pay process model developed by TBG 14 and based on requirements of the HANMOV UN/EDIFACT UNSM and the Multi Modal Transport Reference Data Model (MMT RDM) including the e-CMR (Electronic Consignment Road Message).

## 2 Objective

The objective of this document is to standardize the Business processes, the Business transactions and the Information entities of the Export Packing List process used by the industries in the supply chain. The business process is the detailed description of the way trading partners intend to play their respective roles, establish business relations and share responsibilities to interact efficiently with the support of their respective information systems. Each Business transaction is realized by an exchange of Business documents (also called messages). The sequences in which these documents are used, composes a particular instance of a scenario and are presented as activity diagrams in the document.

## 3 Audience

The audience of this document is all users who are interested in the delivery process and information data.

## 4 Reference Documents

Knowledge and application of the following standards is crucial to the development of quality business requirements specifications. Other key references are shown in the appropriate part of the document.

- UN/CEFACT TBG2 Buy-Ship-Pay (Including UNeDocs) BRS version 1.0
- UN/CEFACT BUY – SHIP – PAY Reference Data Model 13 Aug 2019
- UN/CEFACT Multi Modal Transport Reference Data Model 1 Mar 2018
- UN/CEFACT Reference Data Model (RDM) Guideline 16 Dec 2016
- UN/CEFACT Code Management User Guide Version 1 (5 Mar 2018)
- UN/CEFACT Modeling Methodology (CEFACT/TMG/N090R10, Nov 2001)
- UN/CEFACT Data Pipeline Carrier (PDES) BRS 17 Feb 2020
- UN/EDIFACT HANMOV Cargo/goods handling and movement message (D20A)
- European Union Packing List (P/L)
- OASIS UBL Packing List
- SITPRO Packing List

## 1 5 Change log

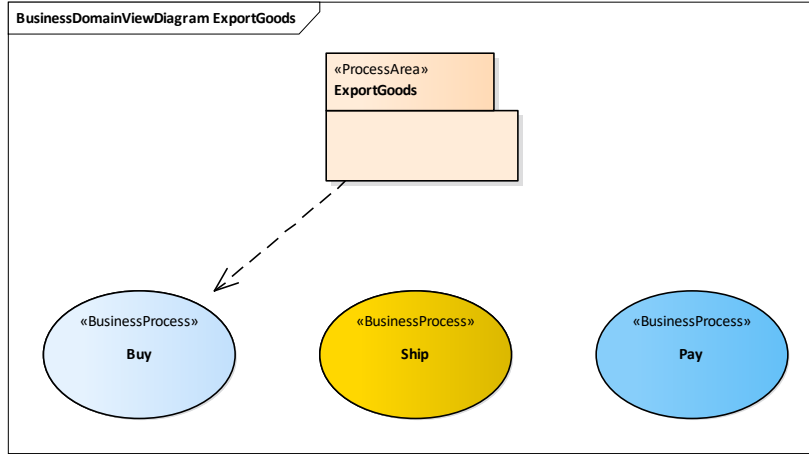
<b>Date of Change</b>	<b>Version</b>	<b>Changed</b>	<b>Summary of Changes</b>
1-July-2020	0.01	-	Initial draft
3-July-2020	0.02	Comments 1 and 3 July processed	Roles & supporting roles clarified
7-July-2020	0.03	Comments 7 July processed	Partner View – Principle Roles and “Maps to” / “On-Behalf” clarified.
10 July-2020	0.03	Comments 10 July processed	Fig. 8,1 Scope of the Export Packing List process changed
14 July-2020	0.04	Comments 14 July processed	Added (clarification canonical data model): Relation between consignment and transaction. Relation between transaction and shipment/delivery Relation between consignment item and line item.

2

## 3 6 Business Requirements View

### 4 6.1 Business Domain View

5 This section describes the extent and limits of the business process within the supply  
6 chain being described in this document.



7  
8 **Figure 6-1 Positioning Export Packing List within BUY-SHIP-PAY Process Model**

9 **Table 6-1 BUY-SHIP-PAY context categories**

Categories	Description and Values
<b>Business Process</b>	Export Packing List process in the supply chain BUY-SHIP-PAY/Delivery/IssueShippingInformation
<b>Product Classification</b>	All
<b>Industry Classification</b>	All
<b>Geopolitical</b>	Global
<b>Official Constraint</b>	None
<b>Business Process Role</b>	Original Consignor ( <i>Seller, Exporter</i> ) Transport Service Provider ( <i>Freight Forwarder, Carrier, Customs Import Agent, Customs Transit Agent, Customs Export Agent,</i> ) Final Consignee ( <i>Buyer, Importer</i> )
<b>Supporting Role</b>	Seller, Buyer, Exporter, Importer, Carrier, Freight Forwarder, Customs Import Agent, Customs Transit Agent, Customs Export Agent
<b>System Capabilities</b>	No limitations

10  
11 **Note:**

12 The processes defined apply only to the collaboration between the Original Consignor, the sender of the goods and Final Consignee, the receiver of the goods. The Transport Service Provider (a Freight Forwarder, Carrier, Customs Import Agent) may represent the Original Consignor or Final Consignee in the packing list process, and will use some of the export packing list data for customs clearance or Proof-of-Delivery Process (POD), such as locations, weight and transport packaging. The freight forwarder, customs import agent) or other supply chain partners will use the information contained on the document to correctly identify and transport cargo. In addition, the details can also be reused on the master bill of lading contracted between the freight forwarder and the master carrier.

22 **Table 6-2 Business Requirements Statement**

Nr.	Business Requirement Statement
A.1	The transporter will use the Export Packing List to issue a bill of lading (BOL).
A.2	The Export Packing List must match the commercial invoice in quantity, description, and all other items.

Nr.	Business Requirement Statement
A.3	Once the consignment reaches its destination the final consignee should be able to compare what has been ordered to what has been shipped. The Export Packing List can be used as further evidence to support a payment.
A.4	The Export Packing List is the responsibility of the consignor and forwarding agents to determine the total weight and volume of the consignment and should represent the correct information.
A.5	The Export Packing List should avoid delays in clearance at the port of destination.
A.6	Used for the Electronic Export Information (EEI) to verify goods.
A.7	The Export Packing List must comply to the requirements for customs clearance as an inventory of the incoming cargo. The generally included data are: <ul style="list-style-type: none"> <li>• Information on the exporter, the importer and the transport company.</li> <li>• Date of issue.</li> <li>• Number of the freight invoice.</li> <li>• Type of packaging (drum, crate, carton, box, barrel, bag, etc.).</li> <li>• Number of packages.</li> <li>• Content of each package (description of goods and no. of items per package).</li> <li>• Marks and numbers.</li> <li>• Net weight, gross weight and measurement of the packages.</li> </ul>

23

**Table 6-3 Data Domains**

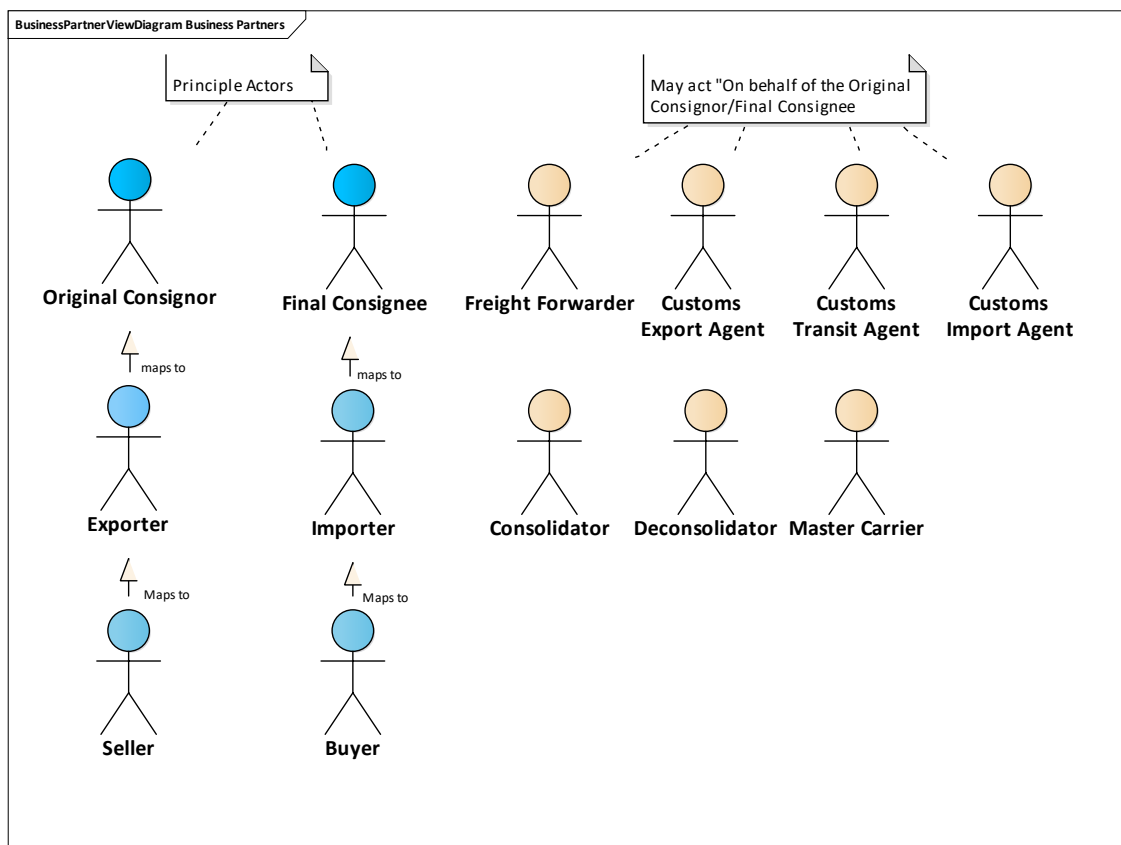
Nr.	Data Domains
B.1	Address
B.2	Amounts ( <i>invoice value, insurance value, declared value for carriage, FOB, service charge amount, transport service charge amount</i> )
B.3	Cargo Insurance
B.4	Cargo Nature
B.5	Classification ( <i>HS code</i> )
B.6	Consignment
B.7	Consignment Item ( <i>description on item level, optional on trade product level</i> )
B.8	Contact
B.9	Country ( <i>export, import, transit, origin</i> )
B.10	Dangerous goods
B.11	Delivery Instructions
B.12	Delivery Terms ( <i>incoterms</i> )
B.13	Exchanged Document
B.14	Handling Instructions
B.15	Identifiers/codes/references: <i>consignment consignor assigned ID / customs assigned ID / carrier assigned ID / freight forwarder assigned ID / transport contract document, other document references, trade party ID, global ID, tex registration ID, logistic package iD, ID, global ID, ID, parent ID, Label ID's, RFID, VIN, trade product IDs, global ID, transport equipment ID, carrier assigned booking ID, transport means ID, movement ID (e.g. voyage ID, journey ID), logistics location ID, coordinates.</i>
B.16	Location ( <i>loading baseport, unloading baseport, transit, consignee receipt</i> )
B.17	Logistic Status
B.18	Package ( <i>quantity of boxes, packages, description, marks</i> )
B.19	Party ( <i>consignor, consignee, exporter, importer, freight forwarder, carrier, customs import agent, customs transit agent, consolidator, deconsolidator</i> )
B.20	Payment terms ( <i>payment arrangement code</i> )
B.21	Referenced Document ( <i>commercial invoice number related to the consignment</i> )
B.22	Shipment type ( <i>e.g. PCL</i> )
B.23	Shipping Marks ( <i>text, seal number(s), barcodes</i> )
B.24	Transport Equipment
B.25	Transport Event ( <i>delivery and pick-up location - dates requested, estimated, scheduled</i> )
B.26	Transport Means
B.27	Transport Movement ( <i>ID, mode, stage etc</i> )
B.28	Transport Service ( <i>Transport Service Requirement Code</i> )
B.29	Volumes/Weights ( <i>packages and consignment (shipment)</i> )

24 **6.2 Definition of terms**

25 **Table 6-4 Definition of terms**

Partner	Definition
Export Packing List	The Export Packing List is a commercial document accompanying the commercial invoice and the transport documents. It provides information on the traded items and the packaging details of each shipment (weight, dimensions, handling issues, etc.). The Seller/Original Consignor (a.k.a. Shippers) must create a compliant packing list document to be used by parties along the supply chain.
Shipment	A shipment is an identifiable collection of one or more Trade Items (available to be) transported together from the Seller (Original Consignor/Shipper) to the Buyer (Final/Ultimate Consignee). One or more shipments (a.k.a. a trade delivery) can belong to one consignment.
Consignment	A consignment is a separately identifiable collection of Consignment Items (available to be) transported from one Original Consignor to one Final Consignee via one or more modes of transport as specified in one single transport service contractual document.
Consignment item	A separately identifiable quantity of products grouped together by Customs tariff code or packaging for transport purposes. A Consignment Item is the lowest level of information within a Consignment. In the case of cross-border consignments each Consignment Item must have only one associated Customs tariff code in order to satisfy Customs requirements.
Trade Item	Trade Items are aggregated by Tariff Code/Packaging into Consignment Items A Trade Item describes the lowest level of "commercial" information in a Sales Order between the Buyer and the Seller. Each Trade Item will usually be associated with a particular product and will include details such as product code, quantity and unit price etc. In the case of cross-border orders each product will also have an associated Customs tariff code.
Customs Item	A Customs Item is a Consignment Item, a Trade Item or an aggregation of Consignment or Trade Items with distinct Customs tariff code for reporting to Customs.
Cargo	Goods carried on a ship, aircraft, or motor vehicle.

26 **6.3 Business Partner View**



27 **Figure 6-2 Business partners**



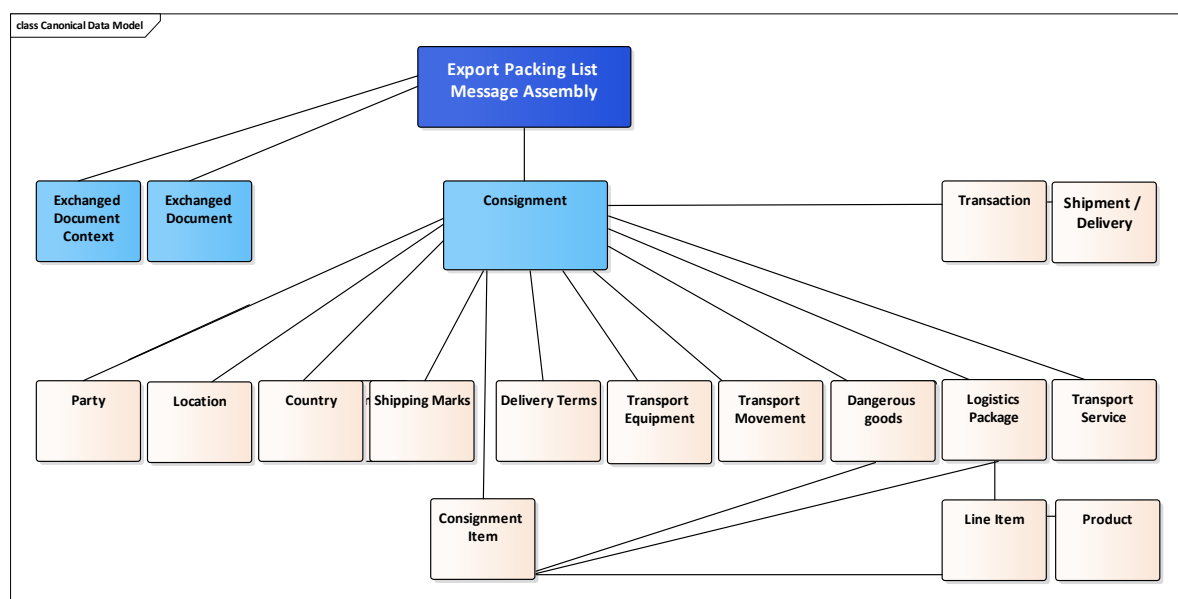
29

**Table 6-5 Business Partners**

Partner	Definition
Buyer	The party to whom goods are sold services as stipulated in a Sales Order Contract.
Consolidator	The party responsible for the consolidation of this supply chain consignment.
Customs Export Agent	The party acting as an agent for, or on behalf of, the consignor with respect to the customs export procedures for this supply chain consignment.
Customs Import Agent	The party acting as an agent for, or on behalf of, the consignee with respect to the customs import procedures for this supply chain consignment.
Customs Transit Agent	The party acting as an agent for, or on behalf of, the consignor with respect to customs transit procedures for this supply chain consignment.
Deconsolidator	The party responsible for the deconsolidation of this supply chain consignment.
Exporter	The party who makes, or on whose behalf the export declaration is made, and who is the owner of the goods or has similar rights of disposal over them at the time when the declaration is accepted.
Final Consignee	The party receiving a consignment of goods as stipulated in a Transport Service Contract (a.k.a. Buyer)
Freight Forwarder	The party undertaking the forwarding of goods by provision of transport, logistics, associated formalities services etc.
Importer	The party who makes, or on whose behalf a Customs clearing agent or other authorized person makes, an import declaration. This may include a person who has possession of the goods or to whom the goods are consigned.
Master Carrier	The party which provides transport services which includes carrying equipment containing multiple consignments each of which is transported under a house contract.
Original Consignor	The party consigning goods as stipulated in a Transport Service Contract (a.k.a. Seller).
Seller	The party selling goods or services as stipulated in a Sales Order Contract.
Transport Service Provider	The provider i.e. seller of transport services as stipulated in a Transport Service Contract.

## 30 6.4 Business Entity View

31 This conceptual model represents the set of data for the electronic Export Packing List. The  
 32 consignment entity can contain information about one or more shipments.



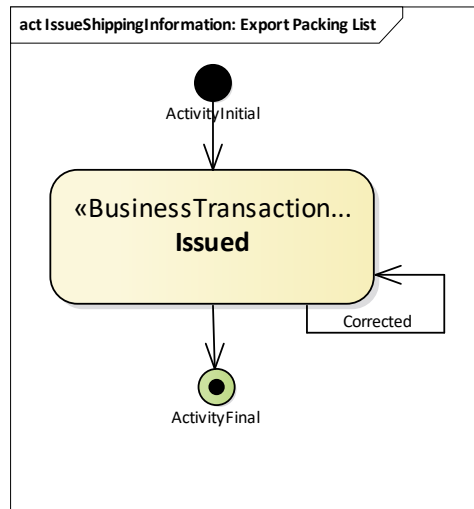
33

34

**Figure 6-3 Canonical Data Model**

35 The life cycle state of an Export Packing List may be corrected (although very rare). Below  
 36 diagram shows the Entity Life Cycle diagram. The Export Packing List Entity has the state

37 “Issued” as a result of the exchange of information between the Original Consignor and the  
 38 Final Consignee (or represented by one of the supporting roles).  
 39 Following the verification by the Final Consignee of the data received, the criteria could not  
 40 have been met and the Original Consignor has to re-issue the Export Packing List. If the  
 41 criteria have been met the activity is finalized.



42

43

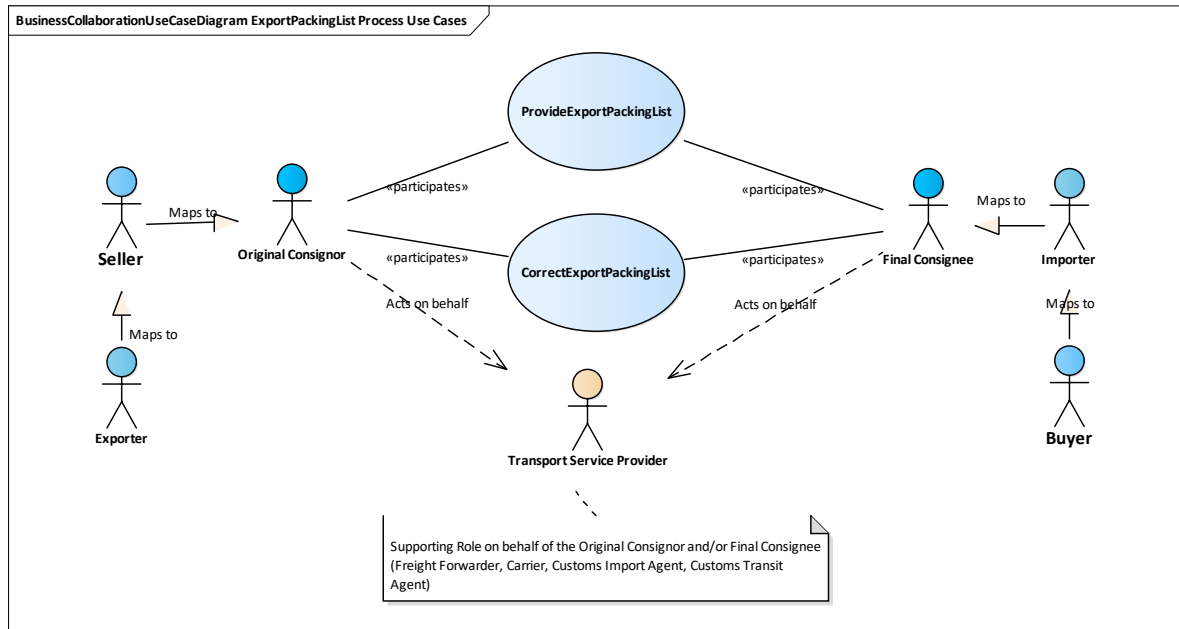
**Figure 6-4 Business Entity Life Cycle Diagram**

## 44 7 Business Choreography View

### 45 7.1 Business Process Elaboration

46 The processes contained in the Export Packing List process are shown in the following  
47 Use Case Diagram.

48



49

50

Figure 7-1 Scope of the Export Packing List process

51

52

53

54

55

56

57

58

59

#### Note:

60

61

62

63

The Original Consignor can be the seller (or one of seller's subsidiaries) but not necessarily. Neither has the Final Consignee to be the buyer of the Goods. Therefore, neither the term seller nor buyer is applicable to describe this partner. An analogous situation applies to Original Consignee.

64

65

In the Export Packing List process, it is foreseen to transmit information between the Original Consignor and the Final Consignee concerning:

66

67

68

69

70

- The shipment and the consigned goods transported by the Original Consignor.
- If necessary, corrected details of a shipment and/or the consigned goods transported by the Original Consignor.

71

72

The Export Packing List process covers the way in which information is provided on the transport of goods.

73

74

75

Providing information to the Original Consignee of the transport of goods at (or near to) the moment of departure, allows the Final Consignee to prepare for the reception of the goods.

76 The structure of the Export Packing List is similar to the transport services contract.  
 77 The focus of this document is on logistics data, including movements and therefore  
 78 will provide information for packaging control.

79 Information exchanged to inform the Final Consignee about the goods transported  
 80 may be structured as described below:

- 81 • Consignment, including consignment item, based - giving the details of a  
 82 consignment from the point of view of the goods transported.
- 83 • Package (logistic unit) based - giving the details of a consignment from the  
 84 point of view of the package used for the transportation, i.e. the logistics units  
 85 within which the goods are transported.
- 86 • A combination of both approaches is possible.

87 In certain circumstances, e.g. because of transportation incidents, the Original  
 88 Consignor may need to correct or cancel the transport and inform the Original  
 89 Consignee accordingly.

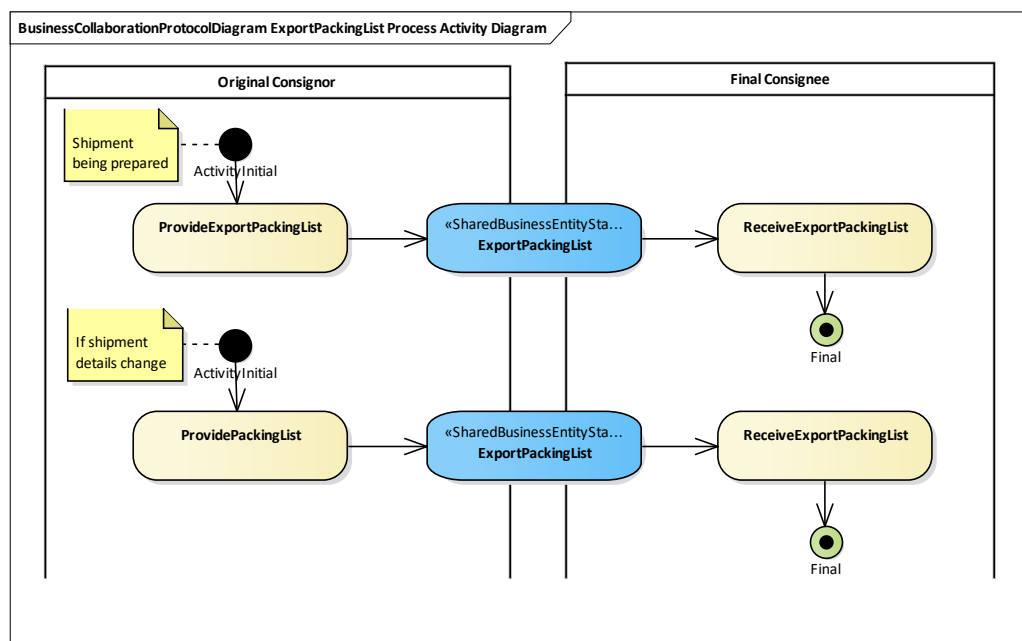
90 Once the Final Consignee has received the logistic units (goods), he will check them  
 91 against the or logistics units within the Export Packing List information. The Final  
 92 Consignee may then send to the Original Consignor, a confirmation of the reception  
 93 of the logistics units (goods) and, if applicable, a notification of any discrepancies  
 94 (out of scope of this BRS).

## 95 7.2 Business Process Flow

96 The Original; Consignor prepares a shipment according to previously received  
 97 instructions or in agreement with terms of delivery as specified in a transport service  
 98 contract. Parallel to the preparation of the physical shipment all necessary data for  
 99 an electronic Export Packing List message is collected and compiled. The message  
 100 is being sent from the Original Consignor to the Final Consignee.

101 In the event of changes in the shipment after the transmission of the Export Packing  
 102 List the Original Consignor compiles an Export Packing List correction message and  
 103 sends it to the Final Consignee.

104 The Activities involved in the Export Packing List process are shown in figure 7-3  
 105 together with the states of the “Export Packing List” Business Entity that are  
 106 changed by the processes.

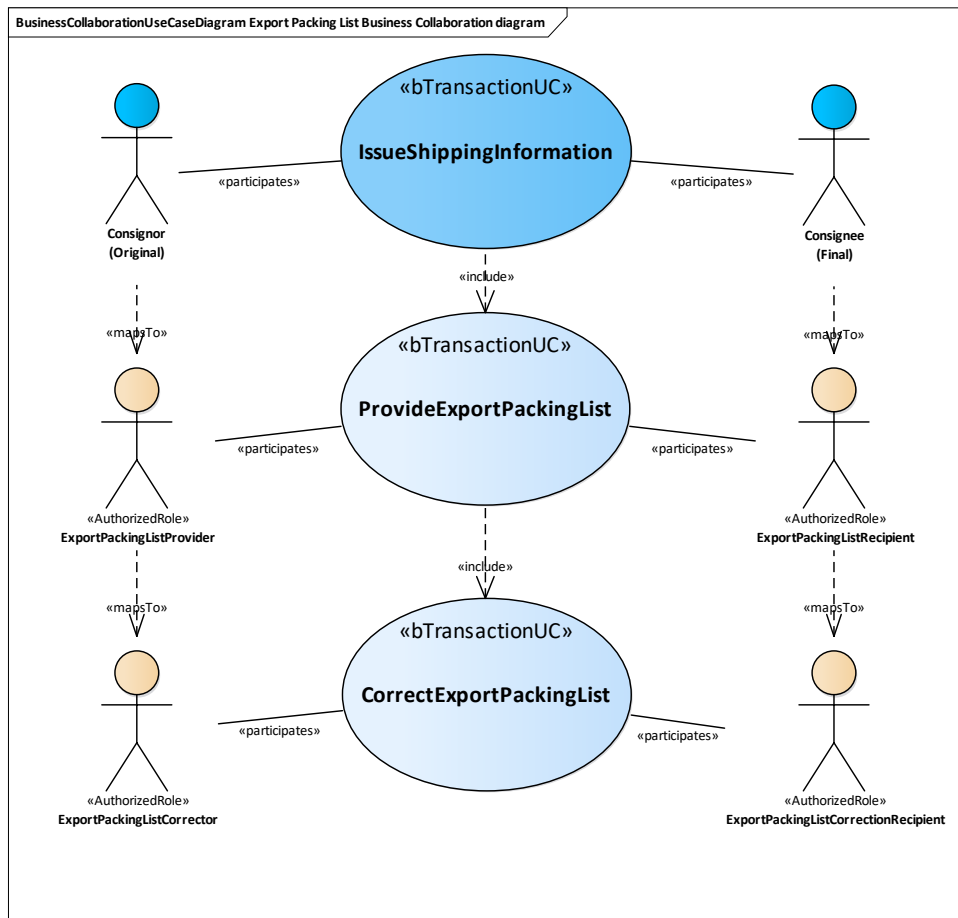


107  
 108

Figure 7-2 Business Process Activity Diagram

109 The states that the Export Packing List Business Entity may assume as a result of  
 110 the Export Packing List business process are shown in the Entity Life Cycle diagram  
 111 figure 7-4.

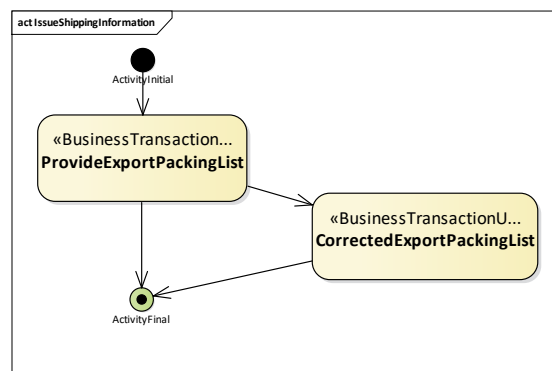
112 **7.3 Business Collaboration**



113  
 114 **Figure 7-3 The Business Collaboration diagram**  
 115

116 The Business Collaboration diagram figure 7-3 (above) shows the transactions that make  
 117 up the Export Packing List process. It also links the authorised roles from each transaction  
 118 to the Business Partner Types (Original Consignor and Final Consignee). The logical  
 119 order in which these transactions may occur is shown in the Business Collaboration  
 120 Protocol diagram figure 7-4 below. The Use Case Diagrams and description of the  
 121 business transactions are shown in section 7.4.

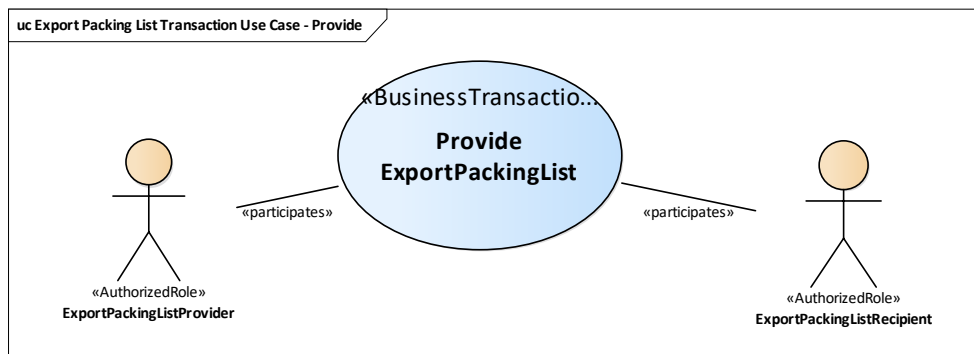
122 Note: In case of a replaced Export Packing List message a reference to the previous  
 123 Export Packing List message may be included.



124  
 125 **Figure 7-4 Business Collaboration Protocol - Activity Diagram**

126 **7.4 Business Transaction View**

127 **7.4.1 Provide Export Packing List (Business Transaction)**

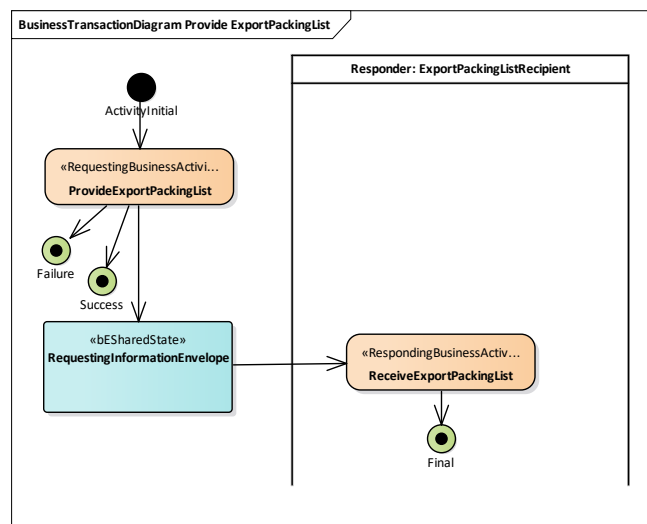


128 **Figure 7-5 Business Transaction Use Case Export Packing List Diagram**

129 **Table 7-1 Business Transaction Use Case Description Provide Export Packing List**

130

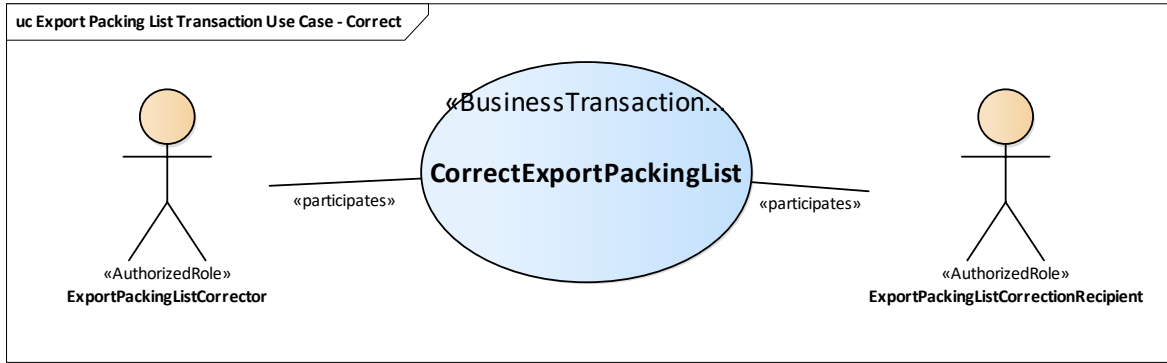
Use case	Provide Export Packing List
<b>Identifier</b>	ProvideExportPackingList
<b>Business Message Type</b>	ExportPackingList
<b>Description</b>	Once the goods are ready to be transported (or have just left) the Original Consignor sends the Final Consignee an Export Packing List to inform him about the goods packed to be transported or being transported. Once the Final Consignee has received the Export Packing List message, the process ends (unless the Final Consignee requests correction on the Export Packing List).
<b>Partner Types</b>	Original Consignor, Final Consignee
<b>Authorized Roles</b>	Export Packing List Provider, Export Packing List Recipient
<b>Legal Implications</b>	In certain cases (such as Ex-works terms) the buyer may have taken responsibility for the custody of the goods when the Export Packing List has been sent. This may also effect ownership.
<b>Initial/Terminal Events</b>	<ul style="list-style-type: none"> <li>• Initial: the goods are ready to leave (or have just left) the Original Consignor location as specified within the transport service contract.</li> <li>• Terminal: the Final Consignee has received the Export Packing List (and can prepare for reception of the goods).</li> </ul>
<b>Scope</b>	Information exchange between Original Consignor and Final Consignee concerning the packing and transportation of goods.
<b>Boundary</b>	
<b>Constraints</b>	



131 **Figure 7-6 Activity Diagram Advise Export Packing List**

133

### 7.4.2 Correct Export Packing List (Business Transaction)



134

135

Figure 7-7 Business Transaction Use Case Diagram Correct Export Packing List

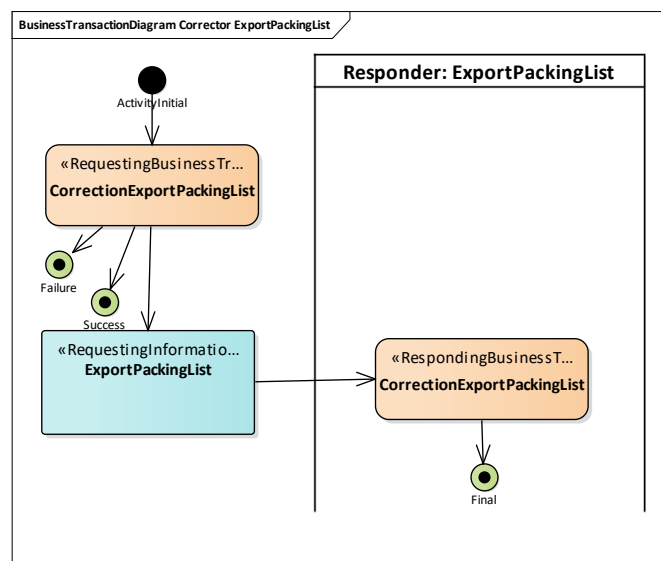
136

137

Table 7-2 Business Transaction Use Case Description Correct Export Packing List

Use case	Correct Export Packing List
<b>Identifier</b>	Correct Export Packing List
<b>Business Message Type</b>	ExportPackingList
<b>Description</b>	Once the goods have left the Original Consignor’s specified location and a change occurs regarding the shipping information, the Final Consignee is informed.
<b>Partner Types</b>	Original Consignor, Final Consignee
<b>Authorized Roles</b>	Export Packing List Corrector, Export Packing List Correction Recipient
<b>Legal Implications</b>	In certain cases (such as Ex-works terms) the Final Consignee may have taken responsibility for the custody of the goods when the Export Packing List was sent.
<b>Initial/Terminal Events</b>	<ul style="list-style-type: none"> <li>• Initial: the shipment details are changed.</li> <li>• Terminal: the Final Consignee has received the corrected Export Packing List.</li> </ul>
<b>Scope</b>	Information exchange between Original Consignor and Final Consignee concerning the packing and transportation of goods.
<b>Boundary</b>	
<b>Constraints</b>	

138



139

140

Figure 8-8 Activity Diagram Correct Export Packing List

141 **8 Business Information View**

142 The attributes for each of the classes that make up the Export Packing List Entity are  
 143 documented in tabular form within the next section.

144 **8.1 Business Documents**

145 **8.1.1 Export Packing List Message Assembly**

146 **Table 8-1 Export Packing List Message Assembly**

Entity	Min	Max	Name	
Entity			Export Packing List	An Export Packing List is a detailed document that states all of the product and packaging details contained in each consignment. Shippers must create a compliant packing list document to be used by parties along the supply chain.
Assoc	0	1	Exchanged Document Context	The scenario or setting of an exchanged document, such as its business process application context.
Assoc	1	1	Exchanged Document	A collection of data for a piece of written, printed or electronic matter that is exchanged between two or more parties.
Assoc	1	1	Supply Chain Consignment	An item within a supply chain consignment of goods separately identified for transport and customs purposes.

147 **8.1.1 Export List Document Data Components**

148 **Table 8-2 Export Packing List Data Components**

Entity	Min	Max	Name	
Entity			Communication	The exchange of thoughts, messages, or information, as universally exchanged by speech, signals, writing, or behaviour between persons and/or organizations.
Attr.	0	1	URI	The Uniform Resource ID (URI), such as a web or an email address, for this universal communication.
Attr.	0	1	Complete Number	The text string of characters that make up the complete number for this universal communication.
Entity			Delivery Instructions	Delivery information of an instructive nature.
Attr.	0	1	Handling Code	A code specifying delivery handling instructions.
Attr.	0	1	Handling Text	Delivery handling instructions expressed as text.
Attr.	0	1	Description	A description of these delivery instructions.
Attr.	0	1	Description Code	The code specifying a description of these delivery instructions.
Entity			Document Context Parameter	A feature that is fixed for a particular document context.
Attr.	0	1	ID	The ID of this document context parameter.
Attr.	0	1	Value Text	The value of this document context parameter.
Entity			Document Line	A collection of data for a line on a piece of written, printed or electronic matter that provides information or evidence.
Attr.	0	1	Line ID	The ID of this document line.



Entity	Min	Max	Name	
Entity			Document Authentication	A proof that a document is genuine.
Attr.	0	1	Government Action Type Code	The code specifying the type of document authentication.
Attr.	0	1	Actual Date Time	The actual date, time, date time, or other date time value of this document authentication.
Attr.	0	1	ID	A ID for this document authentication.
Attr.	0	1	Information	Information for this document authentication.
Attr.	0	1	Signatory Text	The signatory for this document authentication.
Attr.	0	1	Signatory Image Binary Object	The signatory image, expressed as a binary object, for this document authentication.
Entity			Exchanged Document Context	The scenario or setting of an exchanged document, such as its business process application context.
Assoc.	0	1	Business Process	A business process context parameter specified for this exchanged document context.
Assoc.	0	1	BIM	A Business Information Master (BIM) context parameter specified for this exchanged document context.
Assoc.	0	1	Scenario	A scenario context parameter specified for this exchanged document context.
Assoc.	0	1	Application	An application context parameter specified for this exchanged document context.
Assoc.	0	1	Guideline	A guideline context parameter specified for this exchanged document context.
Assoc.	0	1	Subset	A subset context parameter specified for this exchanged document context.
Assoc.	0	1	Message Standard	The message standard document context parameter specified for this exchanged document context.
Assoc.	0	1	User Specified Parameter	A user specified document context parameter specified for this exchanged document context.
Entity			Exchanged Document	A collection of data for a piece of written, printed or electronic matter that is exchanged between two or more parties.
Attr.	1	1	ID	The ID of this exchanged document.
Attr.	0	1	Type Code	The code specifying the type of exchanged document.
Attr.	0	1	Status Code	The code specifying the status of this exchanged document.
Attr.	1	1	Issue Date Time	The date, time, date time or other date time value for the issuance of this exchanged document.
Attr.	0	1	Copy Indicator	The indication of whether or not this exchanged document is a copy.
Attr.	0	1	Remark	A remark regarding this exchanged document.
Attr.	0	1	Revision Date Time	The date, time, date time or other date time value for the revision of this exchanged document.
Assoc.	0	unbounded	Reference Document	Other documents referenced by this exchanged document.
Assoc.	0	1	Signatory Authentication	A signatory document authentication for this exchanged document.

Entity	Min	Max	Name	
Assoc.	0	1	Sender	The party that sends this exchanged document.
Assoc.	0	1	Issuer	The party that issues this exchanged document.
Assoc.	0	unbounded	Recipient	A trade party that receives this exchanged document.
Assoc.	0	unbounded	Attached File	A binary file attached to this exchanged document.
Entity			Geographical Coordinate	A set of geographical coordinates of a specific point such as the longitude, latitude and altitude.
Attr.	0	1	Altitude	The measure of the altitude that reflects the vertical elevation of an object above a surface for this geographical coordinate (Reference ISO 6709).
Attr.	0	1	Latitude	The measure of the latitude as an angular distance north or south from the Equator meridian to the meridian of a specific place for this geographical coordinate (Reference ISO 6709).
Attr.	0	1	Longitude	The measure of the longitude as an angular distance east or west from the Greenwich meridian to the meridian of a specific place (Reference ISO 6709).
Entity			Handling Instructions	Handling information of an instructive nature.
Attr.	0	1	Handling Code	A code specifying these handling instructions.
Attr.	0	1	Procedure Text	A procedure for these handling instructions.
Attr.	0	1	Description	A description of these handling instructions.
Attr.	0	1	Description Code	A code specifying a description of these handling instructions.
Attr.	0	1	Maximum Stackability Weight	The maximum stackability weight applicable to these handling instructions.
Attr.	0	1	Maximum Stackability Quantity	The maximum number of units which can be stacked on top of each other according to these handling instructions.
Attr.	0	1	Maximum Storage Humidity	The measure of the maximum storage humidity applicable to these handling instructions.
Attr.	0	1	Minimum Storage Humidity	The measure of the minimum storage humidity applicable to these handling instructions.
Attr.	0	1	ID	The ID of this handling instructions.
Assoc.	0	1	Transport Setting Temperature	A transport related temperature setting applicable to these handling instructions.
Entity			Shipment / Delivery	A shipment (a.k.a. trade delivery) is an identifiable collection of one or more trade items (available to be) transported. One or more shipments can belong to one consignment.
Attr.	0	1	ID	The ID of the shipment.
Entity			Legal Organization	An organization set up on a legal basis as a business, government body, department, charity, or financial institution.

Entity	Min	Max	Name	
Attr.	0	1	Legal Classification Code	The code specifying the legal classification of this organization, such as Incorporated (Inc), Limited Liability Corporation (LLC) or non-profit.
Attr.	0	1	Name	A name of this legally set up organization.
Attr.	0	1	ID	A ID for this legally set up organization.
Attr.	0	1	Trading Name	The trading business name of this legally set up organization.
Entity			Logistics Label	A label used for identifying goods for logistics purposes, such as a barcode, a radio frequency tag or a Vehicle Identification Number (VIN).
Attr.	0	1	ID	The ID of this logistics label.
Attr.	0	1	Layout Type Code	The code specifying the layout type of this logistics label.
Entity			Logistics Location	A logistics related physical location or place.
Attr.	0	1	ID	A ID for this logistics related location, such as a United Nations Location Code (UNLOCODE) or GS1 Global Location Number (GLN).
Attr.	0	1	Name	A name of this logistics related location.
Attr.	0	1	Type Code	A code specifying the type of this logistics related location.
Attr.	0	1	Country Code	The code specifying the country for this logistics location.
Attr.	0	1	Country Sub-Division ID	The ID of the country sub-division for this logistics related location.
Assoc.	0	1	Geographical Coordinates	Geographical coordinate information for this logistics related location.
Assoc.	0	1	Postal Address	The postal trade address information for this logistics related location.
Entity			Logistics Package	A self-contained wrapping or container within which goods can be contained for logistics purposes, such as a box or a barrel which can be filled, partially filled or empty.
Attr.	0	1	Item Quantity	The number of logistics packages at this level.
Attr.	0	1	Gross Weight	The measure of the gross weight (mass) of this logistics package and its contents.
Attr.	0	1	Nominal Gross Weight	The measure of the nominal gross weight (mass) of this logistics package and its contents.
Attr.	0	1	Net Weight	The measure of the net weight of this logistics package, i.e. the weight (mass) of the contents.
Attr.	0	1	Gross Volume	The measure of the gross volume of this logistics package.
Attr.	0	1	Nominal Gross Volume	The measure of the nominal gross volume of this logistics package.
Attr.	0	1	Level Code	The code specifying the level of this logistics package.
Attr.	0	1	Type Code	A code specifying the type of logistics package.
Attr.	0	1	Type Text	A type of this logistics package.
Attr.	0	1	Sequence Number	The sequence number of this logistics package.

Entity	Min	Max	Name	
Attr.	0	1	ID	The ID for this logistics package.
Attr.	0	1	Global ID	The unique global ID for this logistics package.
Attr.	0	1	Parent ID	The unique parent ID for this logistics package.
Attr.	0	1	Information	Information for this logistics package.
Attr.	0	1	Per Package Unit Quantity	A number of units per package in this logistics package.
Assoc.	0	unbounded	Shipping Marks	Physical shipping marks and barcode information for this logistics package.
Assoc.	0	unbounded	Trade Line Item	A supply chain trade line item included in this logistics package.
Assoc.	0	1	Dimensions	The linear spatial dimensions of this logistics package.
Entity			Logistics Seal	A device used to secure an object and protect it from unauthorized entry or tampering during transport or other logistics operations.
Attr.	0	1	ID	A ID for this logistics seal.
Attr.	0	1	Type Code	The code specifying the type of logistics seal.
Entity			Logistics Service Charge	A charge made for a logistics related service.
Attr.	0	1	ID	The ID for this logistics service charge.
Attr.	0	1	Description	A description of this logistics service charge.
Attr.	0	1	Tariff Class Code	The code specifying the tariff class for this logistics service charge which represents an entry in a table of fixed charges [Reference United Nations Code List (UNCL) 5243].
Attr.	0	1	Charge Category Code	The code specifying the category of charge for this logistics service charge.
Attr.	0	1	Service Category Code	The code specifying the category of service for this logistics service charge.
Attr.	0	1	Applied Amount	A monetary value applied to this logistics service charge.
Attr.	0	1	Allowance/Charge Text	The allowance or charge for this logistics service charge.
Attr.	0	1	Calculation Basis Code	The code specifying a basis on which this logistics service charge is to be calculated, such as by volume or per unit.
Attr.	0	1	Calculation Basis Text	The basis on which this logistics service charge is to be calculated, such as by volume or per unit.
Assoc.	0	1	Applied From Location	The start location from which this logistics service charge should be applied.
Assoc.	0	1	Applied To Location	The end location at which this logistics service charge is no longer to be applied.
Entity			Logistics Shipping Marks	Physical markings or labels on individual packages or transport units for logistics purposes.
Attr.	0	1	Marking Text	Marking for these logistics shipping marks.
Assoc.	0	unbounded	Barcode Label	A barcode label that is a part of these logistics shipping marks.

Entity	Min	Max	Name	
Assoc.	0	unbounded	RFID Label	A Radio Frequency Identification (RFID) label that is a part of these logistics shipping marks.
Assoc.	0	unbounded	VIN Label	A Vehicle Identification Number (VIN) label that is a part of these logistics shipping marks.
Entity			Logistics Status	The information relevant to a condition or a position related to logistics.
Attr.	0	1	Condition Code	The code specifying this logistics status condition [UNECE Recommendation 24].
Attr.	0	1	Description	The description of this logistics status.
Entity			Logistics Transport Equipment	A piece of equipment used to hold, protect or secure cargo for logistics purposes.
Attr.	0	1	ID	The ID of this piece of logistics transport equipment.
Attr.	0	1	Loading Length	The measure of the loading length of this piece of logistics transport equipment.
Attr.	0	1	Category Code	The code specifying the category for this piece of logistics transport equipment, such as container or trailer.
Attr.	0	1	Size/Type Code	The code specifying the characteristic or characteristics of this piece of logistics transport equipment, such as the ISO 6346 transport equipment size and type code.
Attr.	0	1	Characteristic Text	The characteristic or characteristics of a piece of logistics transport equipment, such as its size and type.
Attr.	0	1	Full/Empty Code	The code specifying the used capacity of this piece of logistics transport equipment, such as full or empty.
Attr.	0	1	Carrier Assigned Booking ID	A carrier assigned booking ID for this piece of logistics transport equipment.
Attr.	0	1	Sealed Indicator	The indication of whether or not this piece of logistics transport equipment is sealed.
Attr.	0	1	Returnable Indicator	The indication of whether or not this piece of logistics transport equipment is returnable.
Assoc.	0	unbounded	Affixed Seal	A seal affixed to this piece of logistics transport equipment.
Assoc.	0	1	Dimensions	The linear spatial dimensions of this piece of logistics transport equipment.
Entity			Logistics Transport Means	The devices used to convey goods or other objects from place to place during logistics cargo movements.
Attr.	0	1	Type Code	The code specifying the type of logistics means of transport (Reference UNECE Recommendation 28).
Attr.	0	1	Type Text	The type of this logistics means of transport.
Attr.	0	1	ID	An ID of this logistics means of transport, such as the International Maritime Organization number of a vessel.
Attr.	0	1	Name	The name of this logistics means of transport.
Entity			Logistics Transport Movement	The conveyance (physical carriage) of goods or other objects used for logistics transport purposes.

Entity	Min	Max	Name	
Attr.	0	1	Stage Code	The code specifying the stage of this logistics transport movement.
Attr.	0	1	Mode Code	The code specifying the mode, such as by air, sea, rail, road or inland waterway, for this logistics transport movement.
Attr.	0	1	Mode Text	The mode of this logistics transport movement.
Attr.	0	1	ID	The ID for this logistics transport movement, such as a voyage number, flight number, or trip number.
Attr.	0	1	Service Code	The code specifying the service of this logistics transport movement, such as regular, milk run or spot service.
Attr.	0	1	Service Text	The service of this logistics transport movement.
Attr.	0	1	Type Text	The type, as expressed as text, of the logistics transport movement.
Assoc.	0	1	Used Transport Means	The means of transport used for this logistics transport movement.
Entity			Measurement	An amount, size, or extent as established by measuring.
Attr.	0	1	Condition Measure	A measure of a condition for this measurement.
Attr.	0	1	Description	A description of this measurement.
Entity			Note	A textual or coded description, such as a remark or additional information.
Attr.	0	1	Content Text	A content of this note.
Attr.	0	1	Subject Code	A code specifying the subject of this note.
Entity			Packaging Marking	An inscription, stamp or label on packaging, such as to indicate date, ownership, quality, manufacture or origin.
Attr.	0	1	Type Code	A code specifying a type of packaging marking.
Attr.	0	1	Content Text	Content of this packaging marking.
Attr.	0	1	Barcode Type Code	A code specifying a type of barcode for this packaging marking.
Attr.	0	1	Content Code	Content, expressed as a code, of this packaging marking.
Entity			Product Certificate	A collection of data for a piece of written, printed or electronic matter that provides information or evidence about the product.
Attr.	0	1	ID	The ID for this product certificate.
Attr.	0	1	Type Code	A code specifying the type of product certificate.
Attr.	0	1	Description	A description of this product certificate.
Entity			Product Characteristic	A prominent attribute or aspect of a product.
Attr.	0	1	Type Code	A code specifying a type of product characteristic.
Attr.	0	1	Description	A description of this product characteristic.
Attr.	0	1	Value Text	A value for this product characteristic.
Attr.	0	1	Value Code	The code specifying the value of this product characteristic.
Entity			Product Classification	A systematic arrangement of products in classes or categories according to established criteria.

Entity	Min	Max	Name	
Attr.	0	1	Class Code	The code specifying the class for this product classification.
Attr.	0	1	Class Name	A class name for this product classification.
Entity			Referenced Document	Written, printed or electronic matter that is referenced.
Attr.	0	1	Issuer Assigned ID	The unique issuer assigned ID for this referenced document.
Attr.	0	1	Type Code	The code specifying the type of referenced document.
Entity			Spatial Dimensions	A measure of spatial extent of an object, such as the length, breadth or height of a shipping container.
Attr.	0	1	Value Measure	The measure of the value of this spatial dimension.
Attr.	0	1	Type Code	The code specifying the type of spatial dimension, such as thickness, area, or volume.
Attr.	0	1	Description	A description of this spatial dimension.
Attr.	0	1	Width	The measure of the width component of this spatial dimension.
Attr.	0	1	Length	The measure of the length component of this spatial dimension.
Attr.	0	1	Height	The measure of the height component of this spatial dimension.
Attr.	0	1	ID	The ID of this spatial dimension.
Attr.	0	1	Diameter	The measure of the diameter component for this spatial dimension.
Entity			Supply Chain Consignment Item	An item within a supply chain consignment of goods separately identified for transport and customs purposes.
Attr.	0	1	Goods Type Code	The code specifying the type of supply chain consignment item.
Attr.	0	1	Declared Value For Customs Amount	The monetary value of this supply chain consignment item as declared for customs purposes.
Attr.	0	1	Declared Value For Statistics Amount	The monetary value of this supply chain consignment item as declared for statistical purposes.
Attr.	0	1	Invoice Amount	A monetary value for an invoice for this supply chain consignment item.
Attr.	0	1	Gross Weight	A measure of the gross weight (mass) of this supply chain consignment item which includes packaging but excludes any transport equipment.
Attr.	0	1	Net Weight	A measure of the net weight (mass) of this supply chain consignment item which excludes all packaging.
Attr.	0	1	Gross Volume	A measure of the gross volume, normally calculated by multiplying the maximum length, width and height of this supply chain consignment item.
Attr.	0	1	Tariff Quantity	The tariff quantity in this supply chain consignment item.
Attr.	0	1	Package Quantity	The package quantity for this supply chain consignment item.
Attr.	0	1	Global ID	A global ID for this supply chain consignment item.

Entity	Min	Max	Name	
Assoc.	0	1	Cargo Nature Identification	Transport cargo details of this supply chain consignment item sufficient to identify its nature for customs, statistical or transport purposes.
Assoc.	0	unbounded	Transport Dangerous Goods	Dangerous goods transport details applicable to this supply chain consignment item.
Assoc.	0	unbounded	Logistics Package	A lo for this supply chain consignment item.
Assoc.	0	unbounded	Service Charge	A logistics service charge applicable to this supply chain consignment item.
Assoc.	0	1	Reported Logistics Status	A logistics status reported for this supply chain consignment item.
Assoc.	0	unbounded	Applicable Note	A note providing information applicable to this supply chain consignment item.
Assoc,	0	unbounded	Line Item	A Line Item included in this supply chain consignment item.
Entity			Supply Chain Consignment	A separately identifiable collection of goods items to be transported or available to be transported from one consignor to one consignee in a supply chain via one or more modes of transport where each consignment is the subject of one single transport contract.
Attr.	0	1	Consignor Assigned ID	The ID assigned by the consignor to this supply chain consignment.
Attr.	0	1	Customs ID	A ID, for customs purposes, for this consignment.
Attr.	0	1	Carrier Assigned ID	The ID assigned by the carrier to this supply chain consignment, such as a booking reference number when cargo space is reserved prior to loading.
Attr.	0	1	Freight Forwarder Assigned ID	The ID assigned by the freight forwarder to this supply chain consignment.
Attr.	0	1	Gross Weight	A measure of the gross weight (mass) of this supply chain consignment which includes the weight of packaging but which excludes the weight of any transport equipment.
Attr.	0	1	Net Weight	A measure of the net weight (mass) of this consignment which excludes the weight of packaging of this supply chain consignment and that of any transport equipment.
Attr.	0	1	Gross Volume	A measure of the gross volume, normally calculated by multiplying the maximum length, width and height of this supply chain consignment.
Attr.	0	1	Chargeable Weight	A measure of a chargeable weight of this supply chain consignment.
Attr.	0	1	FOB Amount	The monetary value that has to be, or has been, paid for this supply chain consignment as calculated under FOB (Free on Board) delivery terms.
Attr.	0	1	Insurance Value Amount	The monetary value of this supply chain consignment as covered by an insurance policy.
Attr.	0	1	Associated Invoice Amount	A monetary value of an invoice associated with this supply chain consignment.



Entity	Min	Max	Name	
Attr.	0	1	Declared Value For Customs Amount	The monetary value declared for customs purposes for this supply chain consignment.
Attr.	0	1	Consignment Item Quantity	The number of consignment items separately defined for transport or customs purposes within this supply chain consignment.
Attr.	0	1	Number Of Packages	The number of packages within this supply chain consignment.
Attr.	0	1	Summary Description	A textual summary description of this supply chain consignment.
Attr.	0	1	Transport Split Description	The description of the transport split of this supply chain consignment across different transport means or transport equipment.
Attr.	0	1	Transport Equipment Split Goods Indicator	The indication of whether or not the goods in this supply chain consignment are split across more than one piece of transport equipment.
Attr.	0	1	Declared Value For Carriage Amount	The monetary value of this supply chain consignment as declared by the shipper or his agent for the purpose of varying the carrier's level of liability from that provided in the contract of carriage, in case of loss or damage to goods or delayed delivery.
Attr.	0	1	Payment Arrangement Code	The code specifying the payment arrangements for this supply chain consignment.
Attr.	0	1	Package Type Text	A type of package for this supply chain consignment.
Attr.	0	1	Net Volume Measure	A measure of the net volume of this supply chain consignment item which excludes all packaging.
Assoc.	0	1	Consignor	The consignor party for this supply chain consignment.
Assoc.	0	1	Consignee	The consignee party for this supply chain consignment.
Assoc.	0	1	Carrier	The carrier party for this supply chain consignment.
Assoc.	0	1	Freight Forwarder	The freight forwarder party for this supply chain consignment.
Assoc.	0	1	Importer	The party who imports this supply chain consignment.
Assoc.	0	1	Exporter	The party who exports this supply chain consignment.
Assoc.	0	1	Customs Export Agent	The party acting as an agent for, or on behalf of, the consignee with respect to the customs import procedures for this supply chain consignment.
Assoc.	0	1	Customs Import Agent	The party acting as an agent for, or on behalf of, the consignee with respect to the customs import procedures for this supply chain consignment.
Assoc.	0	1	Customs Transit Agent	The party acting as an agent for, or on behalf of, the consignor with respect to customs transit procedures for this supply chain consignment.
Assoc.	0	1	Deconsolidator	The party responsible for the consolidation of this supply chain consignment.

Entity	Min	Max	Name	
Assoc.	0	1	Consolidator	The party responsible for the deconsolidation of this supply chain consignment.
Assoc.	0	1	Consignee Receipt Location	The location at which this supply chain consignment will be or has been received by the consignee.
Assoc.	0	1	Loading Baseport Location	The baseport location at which this supply chain consignment is to be loaded on a means of transport according to the transport contract.
Assoc.	0	1	Unloading Baseport Location	The baseport location at which this supply chain consignment is to be unloaded from a means of transport according to the transport contract.
Assoc.	0	unbounded	Transit Location	A location of transit for this supply chain consignment.
Assoc.	0	1	Final Destination Location	The final destination location for this supply chain consignment.
Assoc.	0	unbounded	Associated Document	A referenced document associated with this supply chain consignment, such as the certificate of origin or dangerous goods note.
Assoc.	0	1	Physical Shipping Marks	Physical logistics shipping marks and barcoding information related to this supply chain consignment.
Assoc.	0	1	Delivery Event	The delivery event for this supply chain consignment.
Assoc.	0	1	Pick-Up Event	The pick-up event for this supply chain consignment.
Assoc.	0	unbounded	Included Consignment Item	A consignment item included in this supply chain consignment.
Assoc.	0	unbounded	Used Transport Equipment	Logistics transport equipment utilized for this supply chain consignment.
Assoc.	0	unbounded	Specified Transport Movement	A logistics transport movement specified for this supply chain consignment.
Assoc.	0	1	Origin Country	A country of origin for this supply chain consignment.
Assoc.	0	unbounded	Transit Country	A transit country for this supply chain consignment.
Assoc.	0	1	Final Destination Country	The final destination country for this supply chain consignment.
Assoc.	0	1	Import Country	The import country for this supply chain consignment.
Assoc.	0	1	Export Country	The export country for this supply chain consignment.
Assoc.	0	1	Cargo Insurance	The cargo insurance applicable to this supply chain consignment.
Assoc.	0	1	Specified Delivery Terms	Delivery terms specified for this supply chain consignment.
Assoc.	0	unbounded	Transport Service	A transport service for this supply chain consignment.
Assoc.	0	unbounded	Applicable Service Charge	A logistics service charge applicable to this supply chain consignment, such as freight or insurance charges.
Assoc.	0	1	Reported Status	A logistics status reported for this supply chain consignment.
Assoc.	0	unbounded	LogisticsPackage	Logistics packages for this supply chain consignment.
Assoc.	0	1	Nature Identification Cargo	Transport cargo details of this supply chain consignment sufficient to identify its

Entity	Min	Max	Name	
				nature for customs, statistical or transport purposes.
Assoc.	0	1	Dangerous Goods	Dangerous goods applicable to the transport of this supply chain consignment.
Assoc.	0	unbounded	Delivery Instructions	Delivery instructions for this supply chain consignment.
Assoc.	0	unbounded	Related Transaction	A transaction related to this consignment.
Entity			Supply Chain Packaging	Any material with which supply chain goods are packaged, such as a box or bubble wrap.
Attr.	0	1	Type Code	The code specifying the type of supply chain packaging.
Attr.	0	1	Type Text	The type of supply chain packaging.
Attr.	0	1	Description	A description of this supply chain packaging.
Attr.	0	1	Weight	A measure of the weight of this supply chain packaging.
Attr.	0	1	Returnable Indicator	The indication of whether or not this supply chain packaging is returnable.
Attr.	0	1	Total Unit Quantity	A total number of units contained in this supply chain packaging.
Attr.	0	1	Layer Total Unit Quantity	The total number of units in a layer of this supply chain packaging.
Attr.	0	1	Content Layer Quantity	The number of content layers that are or may be packaged with this supply chain packaging, such as the number of layers of product on a pallet.
Assoc.	0	1	Dimensions	The linear spatial dimensions of this supply chain packaging.
Assoc.	0	unbounded	Marking	A marking specified for this supply chain packaging, such as an inscription, stamp or label to indicate date, ownership, quality, manufacture or origin.
Entity			Supply Chain Trade Line Item	A collection of information specific to an item being used or reported on for supply chain trade purposes.
Assoc.	0	1	Associated Document Line	The document line associated with this trade line item.
Assoc.	0	1	Trade Product	A product specified for this supply chain trade line item.
Entity			Tax Registration	Registration with a specific tax authority.
Attr.	0	1	ID	The ID for this tax registration.
Attr.	0	1	IOSS ID	The Import One Stop Shop (IOSS) ID for this tax registration.
Entity			Temperature Setting Instructions	Temperature setting related information of an instructive nature.
Attr.	0	1	Procedure Text	A procedure for these temperature setting instructions.
Attr.	0	1	Description	A description of these temperature setting instructions.
Attr.	0	1	Description Code	The code specifying a description of these temperature setting instructions.
Entity			Trade Address	The location at which a particular trade related organization or person may be found or reached.
Attr.	0	1	ID	A ID for this trade address.
Attr.	0	1	Postcode	A code specifying the postcode of this trade address.

Entity	Min	Max	Name	
Attr.	0	1	Post Office Box	The ID of a container commonly referred to as a box, in a post office or other postal service location, assigned to a person or organization, where postal items may be kept for this trade address.
Attr.	0	1	Building Name	The name of a building, a house or other structure on a street at this trade address.
Attr.	0	1	Line One	The first free form line of this trade address.
Attr.	0	1	Line Two	The second free form line of this trade address.
Attr.	0	1	Line Three	The third free form line of this trade address.
Attr.	0	1	Line Four	The fourth free form line of this trade address.
Attr.	0	1	Line Five	The fifth free form line of this trade address.
Attr.	0	1	Street Name	A name of a street or thoroughfare for this trade address.
Attr.	0	1	City Name	The name of the city, town or village of this trade address.
Attr.	0	1	City Sub-Division Text	A name of a sub-division of a city for this trade address, for example a district or borough.
Attr.	0	1	Country Code	The ID of a country for this trade address.
Attr.	0	1	Country Name	A name of the country for this trade address.
Attr.	0	1	Country Sub-Division Code	A ID of the country sub-division for this trade address.
Attr.	0	1	Country Sub-Division Name	A name of the sub-division of a country for this trade address.
Attr.	0	1	Building Number	The building number in this trade address.
Attr.	0	1	City ID	The ID of the city for this trade address, such as United Nations Location Code (UNLOCODE).
Entity			Trade Contact	A person or a department that acts as a point of contact with another person or department in a trading relationship.
Attr.	0	1	ID	The ID for this trade contact.
Attr.	0	1	Person Name	The name of this trade contact person.
Assoc.	0	1	Telephone	Telephone communication information for this trade contact.
Assoc.	0	1	Email Address	The email URI communication information for this trade contact.
Entity			Trade Country Sub-Division	A political or physical area or region within the political boundaries of a country used or referenced for trade purposes.
Attr.	0	1	ID	The ID for this trade country sub-division.
Attr.	0	1	Name	A name of this trade country sub-division.
Entity			Trade Country	The area of land that belongs to a nation together with its properties, such as population, political organization, etc., used or referenced for trade purposes.
Attr.	0	1	Code	A ID for this trade country.
Attr.	0	1	Name	A name of this trade country.

Entity	Min	Max	Name	
Assoc.	0	1	Sub-Division	A trade country sub-division that is subordinate to this trade country, such as a state, a county, a canton, a province.
Entity			Trade Delivery Terms	Conditions agreed upon between the parties with regard to the delivery of goods and or services for trade purposes.
Attr.	0	1	Code	The code specifying the type of delivery for these trade delivery terms.
Attr.	0	1	Description	A description of these trade delivery terms.
Attr.	0	1	Function Code	A code specifying a function of these trade delivery terms.
Assoc.	0	1	Relevant Location	The trade location relevant for these trade delivery terms.
Entity			Trade Location	A physical location or place used or referenced for trade purposes.
Attr.	0	1	Country Code	The ID of a country location used or referenced in trade.
Attr.	0	1	Country Name	The name of a country location used or referenced in trade.
Attr.	0	1	ID	The ID for this location used or referenced in trade.
Attr.	0	1	Name	The name of this location used or referenced in trade.
Entity			Trade Party	An individual, a group, or a body having a role in a trade business function.
Attr.	0	unbounded	ID	A ID of this trade party.
Attr.	0	unbounded	Global ID	A globally ID of this trade party.
Attr.	0	1	Name	The name for this trade party.
Assoc.	0	1	Legal Organization	The legally constituted organization specified for this trade party.
Assoc.	0	unbounded	Defined Contact Details	A trade contact defined for this trade party.
Assoc.	0	1	Postal Address	The postal address for this trade party.
Assoc.	0	1	Tax Registration	A tax registration specified for this trade party.
Entity			Trade Product	Any tangible output or service produced by human or mechanical effort or by a natural process for trade purposes.
Attr.	0	unbounded	ID	A ID for this trade product.
Attr.	0	unbounded	Global ID	A unique global ID for this trade product.
Attr.	0	1	Seller Assigned ID	The unique seller assigned ID for this trade product.
Attr.	0	1	Buyer Assigned ID	The unique buyer assigned ID for this trade product.
Attr.	0	1	Manufacturer Assigned ID	A unique manufacturer assigned ID for this trade product.
Attr.	0	1	Description	A description for this trade product.
Assoc.	0	unbounded	Characteristic	A characteristic applicable to this trade product.
Assoc.	0	1	Classification	A product classification designated for this trade product.
Assoc.	0	1	Packaging	Packaging applicable for use with this trade product.
Assoc.	0	1	Origin Country	A country of origin for this trade product.
Assoc.	0	1	Manufacturer	A manufacturer party for this trade product.

Entity	Min	Max	Name	
Assoc.	0	unbounded	Additional Document	An additional referenced document for this trade product, such as a manual or a certificate.
Assoc.	0	unbounded	Specified Product Certificate	A product certificate specified for this trade product.
Entity			Transaction	Contains details for the related transaction and their shipments (trade deliveries).
Attr.	0	1	ID	The ID of the transaction.
Attr.	0	1	Type Code	The code specifying the type of transaction, such as an order/
Entity			Transport Temperature Setting	Temperature settings for a transport movement, such as a required storage temperature range.
Attr.	0	1	Value	The measure of the value of this transport setting temperature, such as a temperature value of ten degrees Celsius.
Attr.	0	1	Minimum Value	The measure of the lowest value of this transport setting temperature, such as a minimum temperature value of four degrees Celsius.
Attr.	0	1	Maximum Value	The measure of the highest value of this transport setting temperature, such as a maximum temperature value of fourteen degrees Celsius.
Attr.	0	1	Type Code	The code specifying the type of transport setting temperature [Reference United Nations Code List (UNCL) 6245].
Assoc.	0	1	Instructions	Informational instructions for achieving, maintaining, using or responding to this transport setting temperature.
Entity			Transport Cargo Insurance	Insurance coverage for cargo during transport movements.
Attr.	0	1	Coverage Code	The code specifying the coverage of this transport cargo insurance.
Attr.	0	1	Coverage Description	The description of the coverage of this transport cargo insurance.
Entity			Transport Cargo	Information about goods being transported identifying their nature for customs, statistical or transport purposes.
Attr.	0	1	Type Code	The code, such as UNECE Recommendation 21 single digit codes, specifying the type of transported cargo.
Attr.	0	1	Identification Text	Identification of this transport cargo that is sufficient to identify it for customs, statistical or transport purposes.
Attr.	0	1	Operational Category Code	The code specifying the operational category for this transport cargo, such as obnoxious or military.
Attr.	0	1	Statistical Classification Code	The code specifying a statistical classification for this transport cargo.
Entity			Transport Dangerous Goods	Goods which may contain a substance which poses risks to people and/or the environment during transportation which is regulated by dangerous goods regulations.
Attr.	0	1	UNDG ID	The code specifying the unique United Nations Dangerous Goods (UNDG)

Entity	Min	Max	Name	
				number assigned to these transported dangerous goods.
Attr.	0	1	Regulation Code	The code specifying a regulation applicable to these transported dangerous goods.
Attr.	0	1	Regulation Name	A name for a regulation of these transported dangerous goods.
Attr.	0	1	Technical Name	A technical name for these transported dangerous goods.
Attr.	0	1	EMS ID	The unique transport emergency procedure (EMS) ID applicable for these transported dangerous goods.
Attr.	0	1	MFAG ID	The unique Medical First Aid Guide (MFAG) ID for these transported dangerous goods.
Attr.	0	1	Packaging Danger Level Code	The code specifying the level of danger that the packaging of these dangerous goods must cover for transport purposes.
Attr.	0	1	Hazard Classification ID	The ID of a hazard class applicable to these transported dangerous goods as defined by the relevant governing regulation authority.
Attr.	0	1	Additional Hazard Classification ID	The ID of an additional hazard class applicable to these transported dangerous goods.
Attr.	0	1	Proper Shipping Name	The proper shipping name for these transported dangerous goods.
Attr.	0	1	Explosive Compatibility Group Code	The code specifying the explosive compatibility group for these transported dangerous goods.
Attr.	0	1	Tunnel Restriction Code	The code specifying the tunnel restriction for these transported dangerous goods.
Attr.	0	1	Aircraft Limitation Information	Aircraft limitation information for these transported dangerous goods.
Attr.	0	1	Limited Quantity Code	A code specifying facilitations for transport of limited quantities of these transported dangerous goods.
Assoc.	0	1	Transport Expert Contact	The expert to be contacted for details about the transport of these dangerous goods.
Assoc.	0	1	Emergency Contact	The person or department to be contacted in the event of any emergency related to these transported dangerous goods.
Assoc.	0	1	Flashpoint Temperature	A measurement of the flashpoint temperature of these transported dangerous goods.
Assoc.	0	1	Handling Instructions	Handling instructions for the transported dangerous goods.
Entity			Transport Event	A significant occurrence or happening during transport.
Attr.	0	1	Type Code	The code specifying the type of transport event.
Attr.	0	1	Estimated Occurrence Date Time	The estimated date, time, date time, or other date time value of the occurrence of this transport event.
Attr.	0	1	Actual Occurrence Date Time	The actual date, time, date time, or other date time value of the occurrence of this transport event.

Entity	Min	Max	Name	
Attr.	0	1	Scheduled Occurrence Date Time	The scheduled date, time, date time, or other date time value of the occurrence of this transport event.
Attr.	0	1	Requested Occurrence Date Time	The requested date, time, date time, or other date time value of the occurrence of this transport event.
Attr.	0	1	Reported Condition Type Code	The code specifying the type of reported condition for this transport event.
Assoc.	0	1	Occurrence Location	The logistics location where this transport event occurs.
Entity			Transport Service	A service associated with a transport movement.
Attr.	0	1	Description	The textual description of this transport service.
Attr.	0	1	Charge Amount	The monetary value of the charge for this transport service.
Attr.	0	1	Service Requirement Code	A code specifying a service requirement for this transport service.
END				

149 **8.1.2 Business Rules**

150 Not applicable